

Janmangal Programme in Rajasthan

Concurrent Evaluation

January 2008

By:



State Institute of Health and Family Welfare, Jaipur

(An ISO 9001: 2008 Certified Institution)

PREFACE

State Institute of Health and Family Welfare is designated as Health System Resource Center under, NRHM in Rajasthan. As SHSRC, SIHFW has a specific role to provide technical support to Department of Medical and Health by conducting need based training programme, research studies and evaluations , documenting the health system reports and support in policy formulation and implementation guidelines.

SIHFW –Rajasthan is conducting various studies on the request of DM&HS. In this context recently Institute has completed a ***“Concurrent Evaluation of Janmangal Programme in Rajasthan”***. We are pleased to share with our clients a report of this evaluation with recommendations and observations.

Janmangal Couple have been working in the state under the FW programme to increase the access of non clinical contraceptives to the eligible couples in the community. Number of scheme has been introduced in the country based on success of JMC programme in Rajasthan. ASHA Sahyogini Concept is also emerged on the basis of this component. Even after the introduction of Asha Sahyogini, Janmangal have still their relevance in the field.

Institute has undertaken an independent evaluation of the scheme to assess its impact and relevance after introduction of ASHA Sahyogini in the State. Faculty and research team of SIHFW visited many PHCs and villages personally and compiled the observation and findings along with concrete recommendation available. We hope policy planner and management would soon take an appropriate action to enhance the efficiency programme.

We would like to place on record the sense of gratitude for Principal Secretary, Medical and Health, who is also Chairman of Executive Council of SIHFW-R . We are also thankful to Secretary FW cum Mission Director, NRHM, Director RCH for providing the opportunity to us for conducting the evaluation.

DrAkhilesh Bhargava
Director

2nd July, 2008
SIHFW, Rajasthan
Jaipur



SIHFW: an ISO: 9001:2008 certified institution
Concurrent Evaluation of Janmangal Programme in Rajasthan

Research team

Dr. Akilesh Bhargava
Director

Coordinator

Dr. Vishal Singh

Field Support

Mr. Sanjay Mathur
Mr. Ashok Jain
Mr. Ravi Garg



SIHFW: an ISO: 9001:2008 certified institution
Concurrent Evaluation of Janmangal Programme in Rajasthan
Acknowledgement

Numerous people have contributed to complete this challenging and time bound task of research in which an impact on community was supposed to assess. We acknowledge the contribution of our guide and supporters, research fellows, respondents from the field and experts who have given their suggestions, valuable time and labour to bring out this research document.

We are especially grateful to Sri. R.K. Meena Principal Secretary, Health, Mrs. Neel Kamal Darbari, Secretary, FW and Mission Director, Dr. S. P. Yadav, Director of this Institute and other guide and supporter including Dr. Shiv Chandra Mathur, Professor PSM, SMS Medical College, Jaipur, State representative UNFPA Mr. Hemant Dwivedi and Mr. Sunil Thomas and Demographer, Mr. J.P. Jat , Faculty of SIHFW Dr. Afifa Jaffar and Dr. Mamta Chauhan, Registrar Sri R.K. Sharma for their encouragement , constant support and guidance. We would like to thanks Director FW to provide support in financing this study as well as provide the information and required data from state level.

I grateful acknowledge the hard labour and sincere efforts put in by my colleagues and Research Associates Mr. Sanjay Mathur, Mr. Ashok Jain, Mr Ravi Garg and Faculty of ANMTCs involved in this evaluation Mr. L.R. Gupta, Alwar, Mr, Rupram Yadav, Jalore, Mr Mahemder Singh, Jaipur, Mr. Sudhir Morison, Dugarpur and Ms. Meenu Yadav, Bhilwada for providing their full support in completion of this project.

Dr. Vishal Singh
Associate Professor
&
Research Coordinator



Index

Preface

Acknowledgement

Abbreviations

Chapter – 1. Introduction

1.1 *Janmangal* Programme in Rajasthan

1.2 Objectives of the Scheme

1.3 Management Structure

1.4 Programme Strategy

1.5 About this study

1.6 Purpose and scope of the study

1.7 The Scope of work includes:

Chapter – 2. Methodology

2.1 Research tools

2.2 Selection of the Districts

2.3 Selection of the Block

2.4 Information areas

2.5 Sample

2.6 Field Survey

Chapter -3 Observation and findings

3.1 profile of JMC and their beneficiaries

3.2 Education status and age distribution

3.3 Status of use of contraceptives and Family size of JMCs

3.4 Working experience

3.5 Training status of JMCs

3.6 Reason for choosing this voluntary work.

3.7 Impact of scheme on social life of JMCs

3.8 *Millan* Meetings

3.9 Role and responsibility

3.10 Logistics and supply

3.11 Services to the beneficiaries

3.12 Honorarium to the JMCs

3.13 Problems in the scheme

Chapter -4 Observation and findings: Community response

4.1 Knowledge about JMC couple/Scheme

4.2 Knowledge about Contraception / limiting the family size



SIHFW: an ISO: 9001:2008 certified institution
Concurrent Evaluation of Janmangal Programme in Rajasthan

- 4.3 Source of information
- 4.4 Use of Contraceptive
- 4.5 Reason for not using the spacing or FP Methods
- 4.6 Behaviour of JMC in the Community
- 4.7 Community Awareness on ASHA-Sahyogini
- 4.8 Comparison of FP services of JMC and Asha- Sahyogini

Chapter -5 Observation and findings: Management Response (1.ANM)

- 5.1 Service tenure of ANMs at Sub Centre
- 5.2 Demand of Spacing Methods
- 5.3 Views on Honorarium to JMCs
- 5.4 Views on Honorarium to JMCs
- 5.5 ASHA-Sahyogini V/s JMC

Chapter -6 Observation and findings: Management response (2. Medical Officer- PHC)

Chapter -7 Findings – District Janmangal Coordinator

- 7.1 Education and experience of coordinators
- 7.2 Training of JMC and Coordinator.
- 7.3. Supervision and monitoring
- 7.4. Implementation issue

Chapter -8 General Observation and recommendations

Annexure.1 Proposed Structure of Janmangal Programme (As suggested by UNFPA)

Annexure.2 Over all Progress report FP services in Rajasthan (Up December 2007)

Annexure.3 Janmangal Programme 2007-08 (Progress up to December 2007)

Annexure.4 List of Master Trainers for Janmangal Training Programme conducted by SIHFW



SIHFW: an ISO: 9001:2008 certified institution
Concurrent Evaluation of Janmangal Programme in Rajasthan

Abbreviations

AIDS	Acquired Immuno Deficiency Syndrome
ANM	Auxiliary Nurse Midwife
ASHA	Accredited Social Health Activist
AWW	<i>Anganwadi</i> Worker
BCC	Behaviour Change Communication
BPM	Block Programme Manager
CHC	Community Health Center
CM&HO	Chief Medical and Health Officer
Dy EPO	Deputy Education and Publicity Officer
Dy. CM&HO	Deputy Chief Medical and Health Officer
DMHS	Directorate of Medical and Health Services
DPM	District Programme Manager
DJMC	District Janmangal Coordinator
DWCD	Department of Women and Child Development
FW	Family Welfare
GoR	Government of Rajasthan
GoI	Government of India
HIV	Human Immuno Virus
HSC	Health Sub Center
IEC	Information Education and Communication
JMC	Janmangal Couple
JSY	Janani Suraksha Yojna
LHV	Lady Health Visitor
PHC	Primary Health Center
MO	Medical Officer
MCHND	Mother and Child Health Day
NGO	Non Governmental Organization
NRHM	National Rural Health Mission
PRI	Panchayati Raj Institutions
RCHO	Reproductive and Child Health Officer
RCH-2	Reproductive and Child Health-2
PW	Pregnant Women
SIHFW	State Institute of Health and Family Welfare
TT	Tetanus Taxied
TB	Tuberculosis
UIP	Universal Immunization Programme



SIHFW: an ISO: 9001:2008 certified institution
Concurrent Evaluation of Janmangal Programme in Rajasthan

Chapter -1

Introduction

1.1 Janmangal Programme in Rajasthan

Extensive experimental efforts in developing countries to explore dynamics of alternative delivery system for family planning services especially the Community Based distribution of contraceptives have been made. In fact availability of supplies and services has been a perennial issue since the inception of Family Planning Programme in the country. Successful programmes have shown moving family planning services from physician based clinical settings to close to the community where demand actually exists.

Community Based Distribution of non-clinical contraceptives (CBD) programme attempts to overcome the limitations of the existing government distribution system by making contraceptives available closer to the community; and break the social and cultural barriers in the use of spacing devices. Community based delivery system are essentially an off-shoot of this inundation approach. It is agreed that enhanced availability of spacing contraceptives will result in increased acceptance leading to fertility reduction, reducing pregnancy risks and child mortality and improving mother's health.

Rajasthan is a only State in the country, where community based distribution of contraceptives and other services like mobilizing people for safe sexual behaviour, immunization, distribution of ORS etc is being implemented through community based volunteers-**Janmangal Couples**. This programme was started in the beginning of last decade (1992) in two districts Udaipur and Alwar. In the year 1995 the programme was expended up to 9 districts .Now looking into the success of the programme it has been expended in all the 32 districts of the state. Under this around 39065 JMC are working in the entire state (Ref. Report of Government Rajasthan Detailed district wise number of JMCs shown in Table 1.

Training of JMCs conducted. Initially there was a provision of two days training but the curriculum of training was revised in the year 2004-5 accordingly Module of the training was developed with the support of UNFPA- IPD Project. Training Trainers were also organized by SIHFW in the state.

1.2 Objectives of the Scheme

The objective of the programme is to promote health of mother and child through proper spacing between births.

1.3 Management Structure

Janmangal Programme is managed through an autonomous body- the State Health and Family Welfare Society for Voluntary Sector (SCOVA) This society is now known as State Health Society. This system was not very effective in terms of programme monitoring and technical support. Considering the scale and intensity of operations, coordination unit (CU) was set up at the state level. The Unit was headed by NGO person, designated as State Coordinator, assisted by two assistants' coordinators and support staff. This unit was responsible for development of comprehensive action plan and implementation of activities. The Contractual positions in the state PMU have been discontinued in the year 2000 and the project is being managed by demography cell.

At the district level deputy CMHO, FW is the nodal person of the programme and District JMC Coordinators have been placed in all the districts to provide support to the nodal person in this programme. This programme is managed by MO at PHC level and ANM at Sub Centre level

1.4 Programme Strategy

Based on the spirit of Volunteerism, the programme is anchored by husband- wife couple at the village level. These couple volunteers are identified as *Janmangal* Couple (JMC). One JMC is selected for every village having a population of 500 to 1000. Two JMC are selected for villages having population between 1000 to 2000 people.



SIHFV: an ISO: 9001:2008 certified institution
Concurrent Evaluation of Janmangal Programme in Rajasthan

Table- 1. Janmangal Programme 2007-08 (Progress up to December 2007)

SN	District	Janmanagl Couples	Millan Baithaks	Contraceptives Beneficiaries		Number of Motivation	
				Oral Pills	Nirodh	Sterilizati on	Copper -T
1	Ajmer	1150	98	17707	18194	43	40
2	Alwar	1851	218	6977	15676	132	52
3	Banswada	1467	274	24425	25001	206	246
4	Baran	1053	245	6052	8070	205	165
5	Barmer	1816	162	32737	35515	28	395
6	Bharatpur	1487	244	16036	16723	352	1560
7	Bhilwara	1745	271	14673	15596	223	1162
8	Bikaner	949	196	22259	22187	111	200
9	Bundi	915	150	8818	9389	14	235
10	Chittorgarh	1830	177	20713	29941	92	190
11	Churu	999	152	14942	17725	288	272
12	Dausa	1058	135	13182	21572	213	935
13	Dholpur	821	107	55223	9251	189	239
14	Dungarpur	1039	181	38957	37918	244	458
15	Sriganganagar	1480	214	17255	28619	573	370
16	Hanumangarh	833	132	13020	35617	152	51
17	Jaipur	2300	357	27764	37797	975	378
18	Jaisalmer	468	64	2436	4464	0	46
19	Jalore	1151	262	13518	13948	65	234
20	Jhalwar	1178	90	4425	13730	29	148
21	Jhunjhunu	1111	334	24682	29783	432	330
22	Jodhpur	1287	276	8829	10547	104	106
23	Karauli	900	133	5236	9265	156	149
24	Kota	836	137	4703	5505	176	129
25	Nagaur	1700	383	29179	35129	173	175
26	Pali	1065	271	8693	6781	54	66
27	Rajasamand	818	185	1189	1434	21	49
28	S. Madhopur	744	122	6788	10142	362	122
29	Sikar	1211	295	10846	12619	139	63
30	Sirohi	530	104	13180	13687	60	128
31	Tonk	917	147	12486	23590	130	143
32	Udaipur	2356	310	3279	3306	323	245
		39065	6674	500209	578721	5980	9081

1.5 About this study

After induction of ASHA Sahyogini under the NRHM as key link worker in the structure, State government decided to evaluate the status and effectiveness of the Janmangal Programme in Rajasthan.

State Institute of Health & family Welfare, Rajasthan has been approached to undertake the responsibility to carry out aforesaid assignment. After finalization of the proposal and TOR institute initiate this study in phase manner.

1.6 Purpose and scope of the study

- To find out present coverage and status of the JMC in terms of their training, services provided by them, availability of contraceptives to the eligible couples through JMCs , attendance of JMC in the Millan Baithaks
- To evaluate the contribution and involvement of JMC in promoting services of spacing methods of contraception and termination
- To assess Effectiveness of JMC in addressing the issues of FP unmet needs and HIV AIDS and RCH
- Gaps and problems in the implementation of programme



SIHFW: an ISO: 9001:2008 certified institution
Concurrent Evaluation of Janmangal Programme in Rajasthan

- Suggest appropriate strategy and implementation frame work for better implementation to justify the utility of the programme.



SIHFW: an ISO: 9001:2008 certified institution
Concurrent Evaluation of Janmangal Programme in Rajasthan

1.7 The Scope of work includes:

- A. Collection of secondary and primary data through
 - I. Interviews of different stake holders
 - II. Observe the functioning of JM Couple and other responsible stakeholders
 - III. Assess the programme strategy including monitoring supervision of the programme.
- B. Data entry and Analysis of the Data
- C. Documentation of observations of investigators/ Supervisors and findings to be immersed from the data
- D. Sharing of Draft report and collect the feedback
- E. Submission of final report



SIHFV: an ISO: 9001:2008 certified institution
Concurrent Evaluation of Janmangal Programme in Rajasthan

Chapter -2 Methodology

Acquire the supporting data field survey for primary data collection was adopted as methodology. To receive the quantitative results as well as opinion on various programme related issues potential category of stakeholders i.e. Deputy CM&HO, District *Janmangal* Coordinator, MO, PHC, ANM, JMCs, Beneficiaries, and non beneficiaries were identified as respondent of the study. A separate questioner was developed for each category. JMC coordinator and Deputy CMHO FW were given identical responses so only one questioner was used for the same category. Qualitative instruments (in-depth) were used to collect information form opinion leaders, *Janmangal* Coordinators and *Janmangal* Couples.

2.1 Research tools

Questioners and in-depth interview schedules were identified as tool for collecting the primary data. During the design of research tolls consultation was done with research professionals and concerned programme in charge of directorate. A meeting was held to finalize the tools under the chair of Director RCH. Representative from Medical College, UNFPA, Demography cell of DMHS were present in the meeting along with consultants and Faculty of the institute. Each category the questioners were reviewed by experts in this meeting. After incorporation of suggestion these tools were finalized for the printing and research work.

2.2 Selection of the Districts

Under this concurrent evaluation total 7 districts of Rajasthan were identified on various indicators. One criteria was the one district from each zone. Other was geographical area representation. Highest number of JMC and Lowest number of JMC working in the district was another criteria. District Alwar was selected as one of the highest and district S Madhopur was selected as lowest number of JMCs in place. Based on good reporting system Bhilwada was selected Jalore was selected as representative of Desert zone. The districts selected in the sample were – *Alwar, Bhilwada, Dungarpur, Sriganganagar, Jalore, Kota, S. Madhopur.*

2.3 Selection of the Block

From each district, at least three blocks were selected. And from each block two PHC were supposed to be selected in the sample but due to less number of JMC present at the time of survey at their places more PHCs and sub centers were covered. In some of the district like Jalore, Dugarpur and Sriganganagar and more than three (4-5) PHC were selected in each block to Complete the sample. In selection of Blocks and PHCs, opinion of District JMC coordinator and Deputy CMHO, FW was considered but independent opinion was finalized. Total number of blocks, PHCs, SHC and villages are shown the table 1.1

1.1. Coverage

SN	District Name	Block	PHC	SHC	Village
1	ALWAR	3	6	59	128
2	BHILWARA	3	9	67	139
3	DUNGARPUR	3	11	84	136
4	JALORE	4	15	87	103
5	KOTA	3	10	53	120
6	SHRI GANGANAGAR	3	8	65	131
7	SAWAI MADHOPUR	3	9	75	97
	Total	22	69	490	854

2.4 Information areas



SIHFW: an ISO: 9001:2008 certified institution
Concurrent Evaluation of Janmangal Programme in Rajasthan

Data collection was based on certain indicators. Framework and design of questionnaires was based on these indicators i.e. social profile, awareness/ knowledge, experience, attitude/perception, and practices/ behaviours of the functionaries/target audience.

2.5 Sample

It was finalized with mutual understanding that total 1050 Janmangal couples in seven blocks will be interviewed. Further all the 32 Janmangal Coordinators, 7 Deputy CM&HOs of the selected districts interviewed through pre tested the questionnaires send by mail for their responses followed by telephonic interview.

To assess the impacted of Janmangal programme, 5 respondents from beneficiaries and 5 from non-beneficiaries were finalized for the interview as sample from each selected village. Total 10500 respondents were decided to interview to see the coverage and impact of the programme.

Total 6 MO, PHCs, and 30 ANMs from each district were finalized for the sample. In the field situation was slightly different so by all efforts sample a decided couldn't be followed. Number of Villages Sub Centers, PHCs and blocks were increased due to non availability of respondent in sufficient number. Responses of LHVs were similar as MOs and responses of Deputy CM& HO were similar as District Janmangal Coordinators they did not give any independent opinion. Both kinds of respondents were primarily not equipped with sound knowledge and exposure about the scheme.

Covered PHCs and Sub Centers were more in numbers comparison to the respondent MOs and ANMs interviewed. During the survey in some of the districts (Dungarpur, Jalore MOs posted on contractual basis at PHCs were on strike so they could not be interrogated. At the time of survey it was the time of marriage season so many JMCs were out of places or at their field. Investigators were remained in the field early morning and late evening but some of the JMCs could not be interrogated due to their absence. In absence of JMCs number of beneficiaries was left out from the survey. At same manner some ANMs were also not found on the place during the survey. But total 43 MOs, 237 ANMs, 20 District Coordinators other than sample districts 1047 JMCs 4933 Beneficiaries and 5120 non beneficiaries were interrogated in detailed for the receiving the primary data. For further reference table 1 is important to see in detail.

2. Number of respondents interrogated

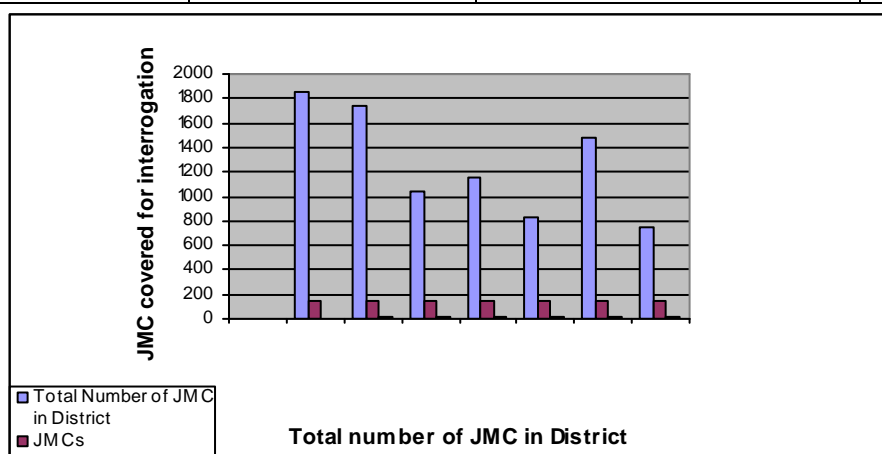
S No	District Name	Total JMC in the District	Total No. of JMC Contacted	JMC Contacted (%)	JMCs found absent	JMC (%)	Number of JMCs interviewed	JMC Interviewed (%)
1.	ALWAR	1851	153	8.25	8	5.23	145	94.77
2.	BHILWARA	1745	162	9.28	9	4.94	154	95.06
3.	DUNGARPUR	1039	165	15.88	13	7.88	152	95.12
4.	JALORE	1151	159	13.81	7	4.41	152	95.59
5.	KOTA	836	160	19.14	9	5.63	151	94.37
6.	SHRI GANGANAGAR	1480	156	10.54	14	8.98	142	91.02
7.	SAWAI MADHOPUR	744	158	21.23	7	4.43	151	95.57
	Total	8846	1114	12.59	67	6.02	1047	93.98

As per the record of DMHS total 8846 JMC are working in all 7 sample districts. Out of total 8846 JMC total 11.83% couples were interviewed. District wise detailed in indicated at table 2. 1



Table 2.1

SN	Name of the District	Total Number of JMC in District	JMCs Covered for interrogation	% covered under survey
1	Alwar	1851	145	7.83
2	Bhilwara	1745	154	8.82
3	Dungarpur	1039	152	14.62
4	Jalore	1151	152	13.20
5	Kota	836	151	18.06
6	Sri Ganganagar	1480	142	9.59
7	S. Madhopur	744	151	20.29
	Total	8846	1047	11.83



2.6 Field Survey

To collect the data a team of investigators and supervisors was selected. For this purpose a number of potential; candidates were contacted through individual professionals and partner research institutions. A selection committee was appointed to identify the appropriate candidates among the huge list. A panel of 30 investigators was finalized for the field survey. 15 supervisors were also deputed to see accurate and proper field work. Out of 15, supervisors 7 were from the faculties of District Training Centers others were from SIHFW. All the Survey team was oriented and trained before departure to the field. List of investigators and supervisors enclosed.



SIHFW: an ISO: 9001:2008 certified institution
Concurrent Evaluation of Janmangal Programme in Rajasthan

Chapter -3

Observation and findings

3.1 profile of JMC and their beneficiaries

Respondents interrogated during the survey were classified with different indicators particularly the age, education status, family size and use of contraceptives. This classification was done only for District *Janmangal* coordinator, JMCs, Beneficiaries and non beneficiaries.

3.2 Education status and age distribution

Number of illiterate JMC is against guideline. As per table 3 out of total 1047JMCs (2094 persons) 235 were found illiterate. Or semi literate; in other side some highly qualified JMC were also found at the place. Number of JMC qualified up to secondary were 501 (25%), senior secondary were 169, whereas 238 were qualified with different degrees like –AYUSH, first year TDC, or some technical courses. Among number of illiterate JMCs, female are at higher side in comparison to male partners. The illiterate number of JMC is higher in the district Jalore and Dungarpur. Need is to replace them by literate one if option is there in the village.

3 Classification of Respondents by education status

S N O	Educa tion Statu s	JMCs				Beneficiaries				Non beneficiaries			
		M	F	Total	(%)	M	F	Total	(%)	M	F	Total	(%)
1	Illiterate	40	195	235	11.22	276	2376	2652	53.90	669	1800	2469	48.22
2	Primary	349	539	888	42.42	289	1156	1445	29.37	706	871	1577	30.80
4	Second ary	367	134	501	23.92	117	280	397	8.07	295	245	540	10.54
5	Senior Second ary	138	31	169	8.07	49	72	121	2.46	90	73	163	3.11
6	Others	124	114	238	11.36	32	132	164	3.33	100	127	227	4.44
7	NR	29	34	63	3.01	21	120	141	2.86	56	88	144	2.81
8	Gradua te	0	0	0	0	0	0	0	0.00	0	0	0	0.00
9	PG	0	0	0	0	0	0	0	0.00	0	0	0	0.00
	Total	1047	1047	2094	100	784	4136	4920		1916	3204	5120	

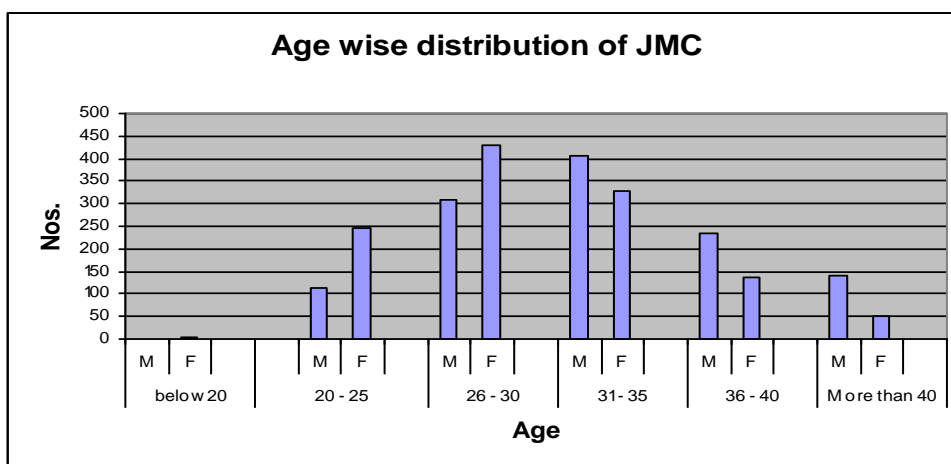
Age of the couples is also a considerable issue. Out of total surveyed couples 483 (23%) couples has crossed the age limit as per the state guidelines. Some of them are more than 40 years of the age (171). In the rural environment age gap has lot of consideration to express the need and requirements of contraception for limiting the family or delaying the fertility. The couples have no courage to ask the senior people to provide the spacing methods. In village **Dholikhera** district **Bhilwada** we have interrogated a couple (Mrs. Fool Kawanar) who have two daughters in laws in her own family working as AWW and JMC. Their daughter in law could be selected as JMC couple but unfortunately Mother in law is working as JMC how a women, can ask to her mother in law for the supply? It is one instance but there are number of couples who have attained the age of 50 or more than 50 but still they are working as JMC in the village. About 636 couples are also in the age group of 31-35, so they may also be considered for replacement by new couples. It is recommended that couples of more than 35 years of the age should be replaced with immediate effect. (See the table .4 for details.)



SIHFV: an ISO: 9001:2008 certified institution
Concurrent Evaluation of Janmangal Programme in Rajasthan

4. Age wise distribution of JMC

S N	Name of the District	below 20			20 - 25			26 - 30			31 - 35			36 - 40			More than 40			No. of JMC Interviewed
		M	F	T	M	F	T	M	F	T	M	F	T	M	F	T	M	F	T	
1	Alwar	0	2	2	13	24	37	30	53	83	55	40	95	26	13	39	21	13	34	145
2	Bhilwara	0	0	0	20	34	54	33	51	84	51	41	92	27	19	46	23	9	32	154
3	Dungarpur	0	0	0	24	49	73	51	52	103	52	38	90	15	9	24	10	4	14	152
4	Jalore	0	1	1	15	32	45	41	54	95	46	39	85	30	19	49	20	5	25	152
5	Kota	0	0	0	9	20	29	35	53	88	48	55	103	43	18	61	16	5	21	151
6	Ganganagar	0	0	0	15	39	52	46	53	99	43	29	72	21	15	36	17	8	25	142
7	S. Madhopur	0	1	1	8	24	32	36	57	93	55	44	99	36	21	57	16	4	20	151
	Total	0	4	4	104	222	326	272	373	645	350	286	636	198	114	312	123	48	171	1047



3.3 Status of use of contraceptives and Family size of JMCs

As per guidelines of scheme, preference is to be given to those couples while selecting them as JMC they themselves may behave like a role model. But table 5 shows that there were 517 (49%) couples who indicated that they are having more than 2 children. If a couple have more than 3, 4, or 5 children how he/she can motivate other for opting the spacing methods. Data indicated in Table 6 are appreciable that more than 50 % couples have opted permanent methods but again if we analyse the age factor more than 25% couple have completed their fertility cycle. So opting any method has no use. Concept is good. Scheme is good but need is to analyse the implementation part.

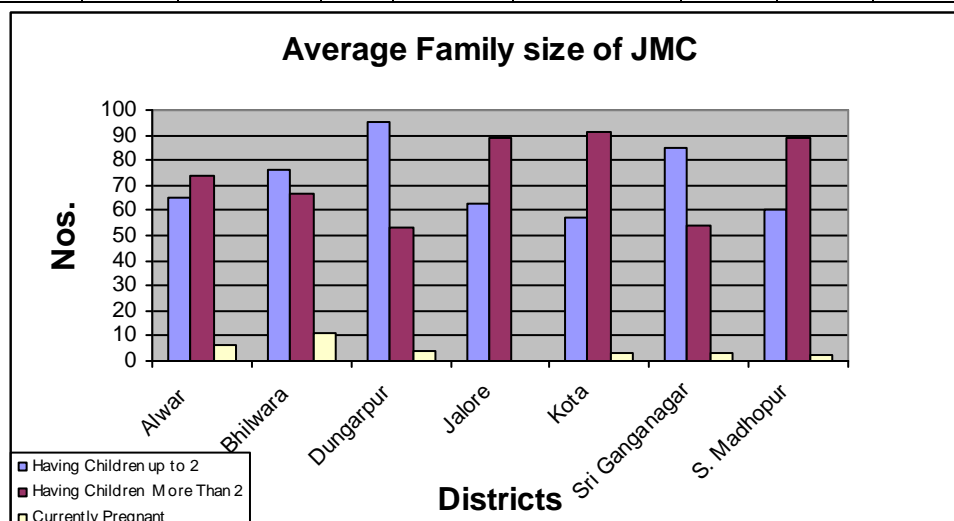
5 Average Family size of JMC

S N o.	Name of the District	Total Number of JMC	Number of JMC Interviewed	Having Children		Having Children		Planning		Total
				up to 2	(%)	More Than 2	(%)		(%)	
1	Alwar	1851	145	65	44.63	74	51.03	6	4.14	145
2	Bhilwara	1745	154	76	49.38	67	43.50	11	7.14	154
3	Dungarpur	1039	152	95	62.50	53	34.87	4	2.63	152
4	Jalore	1151	152	63	41.45	89	58.55	0	0.00	152
5	Kota	836	151	57	37.75	91	60.26	3	1.99	151
6	Sri Ganganagar	1480	142	85	59.86	54	38.03	3	2.11	142
7	S. Madhopur	744	151	60	39.73	89	58.94	2	1.32	151



SIHFW: an ISO: 9001:2008 certified institution
Concurrent Evaluation of Janmangal Programme in Rajasthan

	Total	8846	1047	501	47.85	517	49.38	29	2.77	1047
--	--------------	-------------	-------------	------------	--------------	------------	--------------	-----------	-------------	-------------



6 Contraceptive currently used by JMCs

S. No.	Name of the District	JMC Interviewed	Condom	(%)	Oral pills	(%)	Copper T	(%)	E pills	(%)	Permanent Method	(%)	Other	(%)
1	Al	145	27	18.60	7	4.83	3	2.07	0	0.0	101	69.66	7	4.83
2	Bh	154	50	32.47	10	6.49	5	3.25	1	0.65	69	44.81	13	8.44
3	Dun	152	51	33.55	28	18.42	12	7.89	1	0.66	44	28.95	19	12.50
4	Jal	152	45	29.61	16	10.53	4	2.63	1	0.66	65	42.76	25	16.45
5	Kota	151	26	17.22	4	2.65	3	1.99	0	0.0	102	67.55	13	8.61
6	Sri Gang	142	59	41.55	1	0.70	6	4.23	0	0.0	68	47.89	6	4.23
7	S. Madh	151	37	24.50	7	4.64	1	0.66	0	0.0	93	61.59	14	9.27
	Total	1047	295	28.18	73	6.97	34	3.25	3	0.29	542	51.77	97	9.26

3.4 Working experience

Working experience of JMC is counted. In the district data of JMCs has not been up dated. When we interrogated with JMC in the field names as given by district authorities were different from the JMC working in the field. To get actual picture need is issue orders for up dating the records. Out of total JMCs interviewed 10 % were having working experience only one year or less than one year. Maximum number couples were found with experience of 3-5 years, whereas 108 couples are working more than 8 years. (Table-7)





SIHFW: an ISO: 9001:2008 certified institution
Concurrent Evaluation of Janmangal Programme in Rajasthan

7 Working experience as JMC by duration

S . N o .	Name of the Distri ct	<one year	(%)	1-2 Yrs	(%)	2-3 Years	(%)	3-5 Year s	(%)	5-8 Year s	(%)	More than 8 Yrs	(%)	Total
1	Al	8	5.5 2	14	9.66	33	22.76	40	27.59	37	25.52	13	8.97	145
2	Bhi	25	13. 64	17	11.04	31	20.13	40	25.97	28	18.18	13	8.44	154
3	Dunr	26	17. 11	22	14.47	48	31.58	38	25.00	15	9.87	3	1.97	152
4	Jal	15	9.8 7	26	17.11	56	36.84	30	19.74	17	11.18	8	5.26	152
5	Kot	7	3.9 7	9	5.96	25	16.56	58	38.41	35	23.18	17	11.26	151
6	Sri Gang	11	5.6 3	23	16.20	58	40.85	30	21.13	9	6.34	11	7.75	142
7	S. Mad	0	0.0 0	7	4.64	18	11.92	52	34.44	31	20.53	43	28.48	151
	Total	92	8. 02	118	11.27	269	25.69	288	27.51	172	16.43	108	10.32	1047

3.5 Training status of JMCs

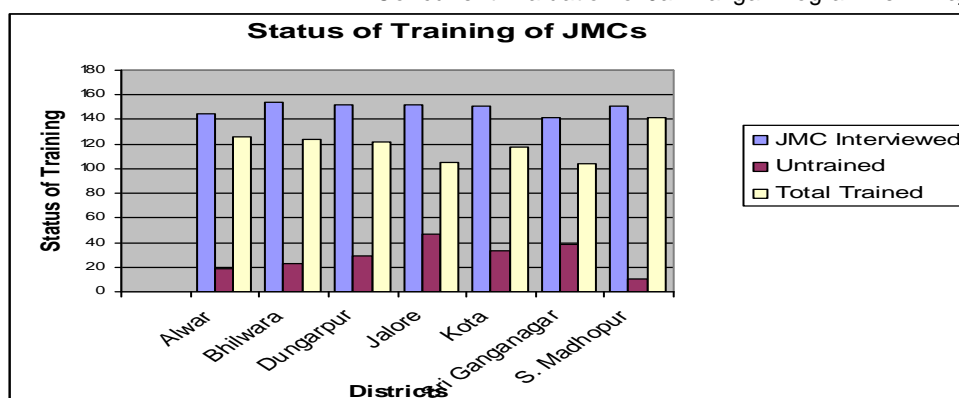
Under the JMC scheme, provision of training of JMCs has been made. Initially JMC were trained for 2 days duration. Again curriculum of training was changed. A revised module was developed by DMHS and training for three days was designed. In the year 2003-04 and 2004-5 training programmes for JMC were organized at mass scale. The JMCs who were trained for 2 days duration, again oriented further for one more day. During the survey it is revealed that about 20% JMC are still untrained out of total surveyed 1047 couples. It shows that training of couple is required again. As per the findings 110 (10.51%) Couple were oriented only for 2 days duration training. As the training was organized in the year 3 -4 years back so need is to orient them to up date the knowledge.

8 Status of Training of JMCs

S . N o .	Name of the District	JMC Intervie wed	Unt rain ed	%	Number of Trained JMCs						Total Trained
					For 2 Days Durat ion	%	For three days	%	N / R	%	
1	Alwar	145	19	13.10	23	15.86	103	71.03	0	0	126
2	Bhi	154	23	14.94	22	14.29	102	66.23	7	4.55	124
3	Dung	152	29	19.08	10	6.58	112	73.68	1	0.65	122
4	Jalore	152	47	30.92	32	21.05	73	48.03	0	0	105
5	Kota	151	33	21.85	6	3.97	112	74.17	0	0	118
6	Sri Gang	142	38	26.76	6	4.23	98	69.01	0	0	104
7	S. Mad	151	10	6.62	11	7.28	130	86.09	0	0	141
	Total	1047	199	19.01	110	10.51	730	69.72	8	0.76	840



SIHFV: an ISO: 9001:2008 certified institution
Concurrent Evaluation of Janmangal Programme in Rajasthan



Regarding the subjects covered during the training only 138 participants were acknowledge about all aspects of training contents. Other 781 participants were aware about the responsibility of JMCs, knowledge of contraceptive methods was indicated by 814 candidates. Knowledge up date is an important aspects need to be considered for strengthening of the scheme.

9. Issues Covered During the Training

Sn	Name of the District	Total No of JMC Interviewed	Responsibility of JMC	Contraceptive Methods	Nation Health Prg.	Communication and Counselling	Millan Baithak	All
1	Alwar	145	126	126	65	33	56	21
2	Bhilwara	154	121	126	85	67	65	34
3	Dungarpur	152	117	119	88	78	77	44
4	Jalore	152	103	94	39	24	85	11
5	Kota	151	87	119	68	36	51	16
6	Sri Ganganagar	142	111	94	22	13	86	2
7	S. Madhopur	151	116	136	88	51	57	10
	Total	1047	781	814	455	302	477	138

3.6 Reason for choosing this voluntary work.

Janmangal couples were asked about their selection. How and why, they have been chosen for this voluntary work. More than 49% were accept this offer due to their self motivation whereas same numbers of people accept that they have come forward to join this noble cause due to motivation of other persons i.e. ANM, AWW or other workers including LHV. Only 1 person gave the reply that it was the compulsion to join the work for him/her. H/she was forced by someone. But it is not clear that how one force other to opt the voluntary profession.

10 Reason for Opting the job of JMC

Sn	Name of the District	Total Number of JMC Interviewed	Self Interest and Motivation	Due to Motivation of Others	By compulsion or force	Other	N/R
1	Alwar	145	101	44	0	0	2
2	Bhilwara	154	120	38	0	0	7
3	Dungarpur	152	139	21	0	1	0
4	Jalore	152	34	115	0	2	1
5	Kota	151	52	104	0	4	0
6	Sri Ganganagar	142	24	112	1	3	5



SIHF: an ISO: 9001:2008 certified institution
Concurrent Evaluation of Janmangal Programme in Rajasthan

7	S. Madhopur	151	48	104	0	0	2
	Total	1047	518	538	1	10	17

3.7 Impact of scheme on social life of JMCs

Work of volunteer under the scheme of *Janmangal* considered as a noble cause because the person engaged as volunteers are not getting any financial input against the services. But definitely this scheme can provide an opportunity to the people to gain respect in the society. Table 11 shows that about 80% respondents accept that their society status and respect increased in the society after joining the scheme as volunteers. The decision of Panchayat to recommend them as ASHA –Sahyogini is one of the evidence of this response. There is some example that Janmangal couple have fight election of pantheist and become the public representative.

11. Improvement of self respect and esteem after joining the job of JMC

S n	Name of the District	Total No of JMC Interviewed	Social status and respect improved	Decreases in Status and respect	No change	N/R	Total
1	Alwar	145	141	0	3	1	145
2	Bhilwara	154	145	0	2	7	154
3	Dungarpur	152	144	0	6	2	152
4	Jalore	152	105	0	45	2	152
5	Kota	151	103	0	48	0	151
6	Sri Ganganagar	142	82	2	57	1	142
7	S. Madhopur	151	94	0	54	3	151
	Total	1047	834	2	215	6	1047

3.8 Millan Meetings

Bimonthly meetings held at PHC level is the key monitoring process of JMC. During this meeting following activities are being furnished:-

- Collection of reports from JMCs
- Continual training and education and the problem solving session
- Distribution of Contraceptives
- Distribution of IEC/Education material
- Information dissemination on programmatic issues
- reimbursement of wage loss or honorarium

During the survey various questions were asked from the respondents. JMC were interrogated on this issue in details. Out of total 1047 JMCs interviewed 90 percent were aware about the duration and provision of meeting which is held bimonthly.

12 Status of Millan Meetings

S.No	District	JMC Interviewed	Meeting held %								NR
			Each month	%	Bi monthly	%	Not fixed	%	NR	%	
1	Alwar	145	2	1.38	136	93.79	1	0.69	4	2.76	2
2	Bhilwara	154	1	0.65	142	92.21	0	0.00	4	2.60	7
3	Dungarpur	152	21	13.82	71	46.71	0	0.00	49	32.24	10
4	Jalore	152	8	5.26	131	86.18	2	1.32	9	5.92	2
5	Kota	151	2	1.32	138	91.39	0	0.00	8	5.30	0
6	Sri Ganganagar	142	4	2.82	127	89.44	0	0.00	11	7.75	0
7	S.Madhopur	151	0	0.00	150	99.34	0	0.00	0	0.00	1



SIHF: an ISO: 9001:2008 certified institution
Concurrent Evaluation of Janmangal Programme in Rajasthan

	Total	1047	38	3.63	895	85.48	3	0.29	85	8.12	22
--	--------------	-------------	-----------	-------------	------------	--------------	----------	-------------	-----------	-------------	-----------

Date of this meeting is not fixed at all places but 735 JMC were given the opinion that the date is fixed. But many times during the endemic or epidemic or campaign or festival period the date of meeting changed it is varied place to place district to district. To decide a fix date for the meeting is good sign monitoring system so that information or communication gaps could be avoided.

13 Date of the Millan Meeting

SNo	Name of the District	of JMC Interviewed	%	Fixed	%	Not fixed	%	Don't Know
1	Alwar	145	28.97	42	70.34	102	0.69	1
2	Bhilwara	154	51.30	79	43.51	67	5.19	8
3	Dungarpur	152	84.21	128	13.82	21	1.97	3
4	Jalore	152	86.84	132	11.18	17	1.97	3
5	Kota	151	96.69	146	1.99	3	1.32	2
6	Sri Ganganagar	142	95.77	136	4.23	6	0.00	0
7	S. Madhopur	151	47.68	72	52.32	79	0.00	0
	Total	1047	70.20	735	28.18	295	1.62	17

In case of change in the date of meeting information was disseminated by various sources. Respondents were informed maximum in number by ANM herself. Some times information was disseminated by JMC coordinator, LHV etc. Detailed is shown in the table -14

14 Informed about the meeting

S.No.	Name of the District	JMC Interviewed	ANM	%	DJMC	%	Other	%	N/R	%
1	Alwar	145	111	76.55	0	0	0	0	34	23.45
2	Bhilwara	154	96	62.34	3	1.95	3	1.95	52	33.77
3	Dungarpur	152	61	40.13	14	9.21	2	1.32	75	49.34
4	Jalore	152	44	28.95	0	0	2	1.32	106	69.74
5	Kota	151	11	7.28	0	0	4	2.65	136	90.07
6	Sri Ganganagar	142	28	19.72	0	0	0	0	114	80.28
7	S. Madhopur	151	66	43.71	9	5.96	0	0	76	50.33
	Total	1047	417	39.83	26	2.48	11	1.05	593	56.64

JMC were aware that the other participants are involved in the meetings. It shows that they are aware about meetings and also participating in the meetings regularly. MO presence accepted by 892(70%) JMCs but other response indicates that MOs are not taking interested in the meeting. Most active participants of the meetings are ANMs and LHV.

15 Participants of the Millan Meetings

Sn	Name of the District	of JMC Interviewed	DJMC	MO	LHV	ANM	Other
1	Alwar	145	113	120	143	138	0
2	Bhilwara	154	101	143	137	141	1
3	Dungarpur	152	95	143	142	143	7
4	Jalore	152	49	88	119	148	2
5	Kota	151	131	135	140	147	3
6	Sri Ganganagar	142	109	116	137	142	1
7	S. Madhopur	151	149	147	150	147	3
	Total	1047	747	892	968	1006	17

Various activities are supposed to organize in the meeting, during the interview JMCs were asked about the activities being furnished during the meeting. About 80% JMCs were report that MPR is



SIHFV: an ISO: 9001:2008 certified institution
Concurrent Evaluation of Janmangal Programme in Rajasthan

being submitted by them to the PHC in charge. Distribution of honorarium, distribution of contraceptives and discussions on problems were the other important activities held during the meeting. New information were also disseminated in the meetings about programme planning or implementation related issues. (See table 16)

16 Activities during the Meeting

S n	Name of the District	JMC Interviewed	Report collection	Distribution of Honorarium	Discussion on Problems	Distribution of Contraceptives	New Information	All
1	Alwar	145	124	113	79	98	85	17
2	Bhilwara	154	139	136	121	137	114	66
3	Dungarpur	152	93	89	59	82	101	13
4	Jalore	152	139	97	62	79	102	12
5	Kota	151	108	97	112	122	41	22
6	Sri Ganganagar	142	122	88	60	80	78	3
7	S. Madhopur	151	115	123	132	121	74	9
	Total	1047	840	743	625	719	595	142

3.9 Role and responsibility

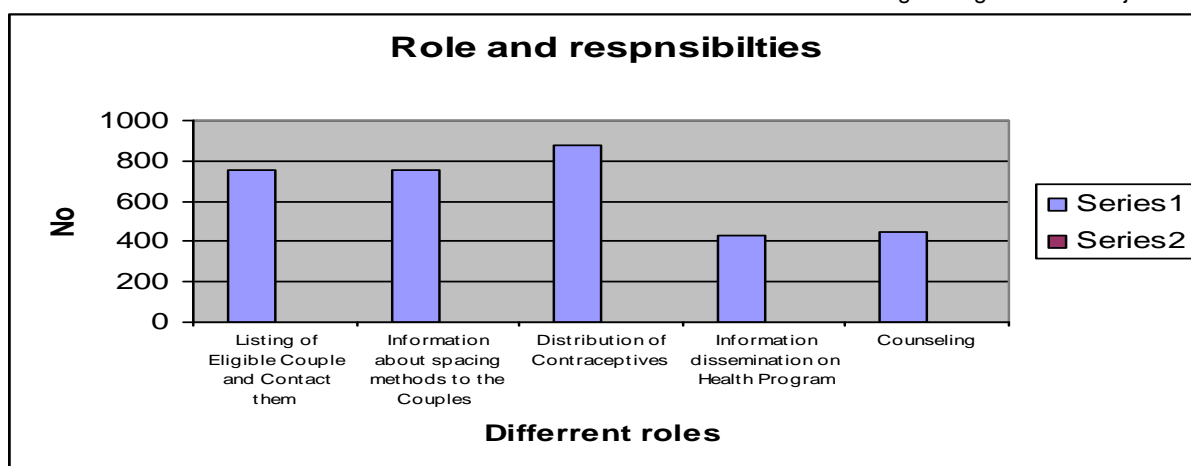
Most important task as a responsibility was indicated by JMC during the survey was distribution of contraceptives but about 20% participants has not indicated it as responsibility which is serious issue. It show they are not working or they not aware at all about the responsibilities. Information dissemination, counselling and listing of eligible couples some of the responsibilities accepted by JMCs (Table 17 for further details)

17 Knowledge about role and responsibility among JMC

Name of the District	JMC Interviewed	Listing and contact with Eligible Couple	%	Information about spacing methods to the Couples	%	Distribution of Contraceptives	%	Information dissemination on Health Program	%	Counselling	%	Other	%
Alwar	145	121	83.45	119	82.06	114	78.62	58	40.00	79	0.69	1	0.69
Bhilwara	154	123	79.87	137	88.96	141	91.56	91	59.09	80	0.65	1	0.65
Dungarpur	152	114	75.00	136	89.47	137	90.13	79	51.97	84	5.26	8	5.26
Jalore	152	106	69.74	55	36.18	122	80.26	50	32.89	75	1.97	3	1.97
Kota	151	83	54.97	103	68.21	132	87.42	67	44.37	27	4.64	7	4.64
Sri Gang	142	96	67.61	51	35.91	100	70.42	31	21.83	57	0.70	1	0.70
S. Madh	151	112	74.17	111	73.50	134	88.74	53	35.10	42	2.65	4	2.65
Total	1047	755	72.11	755	68.03	880	84.05	429	40.97	444		25	



SIHFW: an ISO: 9001:2008 certified institution
Concurrent Evaluation of Janmangal Programme in Rajasthan



Understanding of JMCs about their role and responsibilities

Other than the basic tasks JMCs are performing other activities also which are not directly to be supposed to perform by them but they have been involved in various activities. As per the findings, they have been working for TSC related activities, motivating people for ANC and institutional delivery. Support in MCHN days is also an important task being done by JMCs. Most common task accepted by JMC is supporting in immunization (60%) for further details see table.18

18 Other works performed by JMC

Name of the District	Number of JMC Interviewed	TSC related Work	Prevention for Communicable disease	ANC of PW	Motivation for Institutional Delivery	Support in MCHN Days	Support in Immunization	All	NR
Alwar	145	22	23	5	9	74	63	0	69
Bhilwara	154	36	39	64	64	38	92	17	50
Dungarpur	152	44	50	76	71	44	102	13	33
Jalore	152	81	24	49	18	30	131	0	7
Kota	151	20	18	35	19	29	72	8	72
Sri Gangan	142	30	14	38	6	12	102	2	14
S. Madho	151	9	9	12	6	10	77	4	73
Total	1047	242	177	279	193	237	639	44	318

3.10 Logistics and supply

Supply and logistic of contraceptives is an important issue to make sure the regular distribution to the eligible couples. JMC were fully (99%) agreed that they always full supply of contraceptive. Very rarely they feel about short supply which is being sorted out locally.

Contraceptives are being received by JMCs mostly in the meetings but ANMs are the other important source who provides the contraceptives. From this response one important aspect emerged that JMCs those are not been able to attend the meetings regularly but working actively receiving the contraceptives from ANMs otherwise Millan Meetings are the most common and best source of supply of contraceptives to the JMCs.

18 Source of Spacing Methods received by JMC

S.No.	Name of the District	JMC Interviewed	During Millan Meetings	%	By ANM	%	N/R	Sufficient in number	Total	Insufficient	N/R	Total	%
1	Alwar	145	123	84.83	22	15.17	0	140	145	4	1	145	0



SIHFV: an ISO: 9001:2008 certified institution
Concurrent Evaluation of Janmangal Programme in Rajasthan

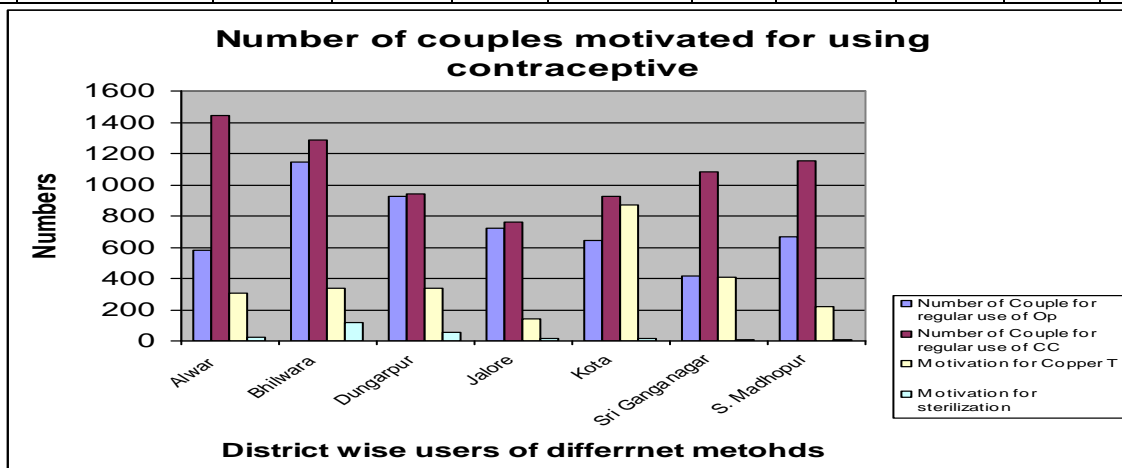
2	Bhilwara	154	98	63.64	44	28.57	12	145	154	0	9	154	12.24
3	Dungarpur	152	59	38.82	92	60.53	1	148	152	3	1	152	1.69
4	Jalore	152	36	23.68	100	65.79	16	148	152	2	2	152	44.44
5	Kota	151	94	62.25	35	23.18	22	139	151	5	7	151	23.40
6	Sri Ganganagar	142	88	61.97	54	38.03	0	139	142	3	0	142	0
7	S. Madhopur	151	118	78.15	30	19.87	3	148	151	0	3	151	2.54
	Total	1047	616	58.83	377	36.01	54	1007	1047	17	23	1047	8.77

3.11 Services to the beneficiaries

JMC are providing services to the beneficiaries by motivating them to use the OP, CC, IUD or sterilization. As per the findings one JMC is providing services to average 4.87 couples for using the Oral Pills, 7.25 average couples are being benefited for CC use. Use of Copper T is very less but it is additional work of JMC so credit is to be given to the JMCs that still they are motivating couples for using IUD as well as sterilization also. Further details table 19 shows the actual picture. OP services are better in Bhilwada district in comparison the other district and Kota is far ahead in motivating people for IUD use.

19 Average Numbers of Couples Benefited by JMC

S n	Name of the District	JMC Interviewed	regular user of OP	Average couple	regular user of CC	Average couple	Motivation for Copper T	Average couple	Motivation for sterilization	Average couple
1	Alwar	145	578	3.98	1443	9.95	303	2.08	22	
2	Bhilwara	154	1147	7.44	1290	8.37	338	2.19	120	
3	Dungarpur	152	929	6.11	940	6.18	340	2.23	53	
4	Jalore	152	722	4.75	762	5.01	139	0.9	16	
5	Kota	151	643	4.25	926	6.13	868	5.74	14	
6	Sri Ganganagar	142	416	2.92	1081	7.61	408	2.87	9	
7	S. Madhopur	151	668	4.42	1151	7.62	216	1.43	4	
	Total	1047	5103	4.87	7593	7.25	2612	2.49	238	022



3.12 Honorarium to the JMCs

Over all response of services by JMCs is good but response of administration is not encouraging. Out of total 1047 respondents interrogated during the survey 996 accepts that honorarium is being distributed but it is delayed. Most of the respondents were the opinion that common problem in JM Programme is honorarium which very low and not being paid on time. In other schemes in which JMCs are being involved also received some honorarium. 20 % respondents gave this opinion.



SIHFW: an ISO: 9001:2008 certified institution
Concurrent Evaluation of Janmangal Programme in Rajasthan

21 Status of Honorarium being received by JMCs

Name of the District	JMC Interviewed	Honorarium Received	%	Not Received	%	N/R	%	Monthly	%	By month	%	6 monthly	%	yearly	%	N/R	%
Al	145	142	97.93	3	2.07	0	0.00	2	1.38	29	20.00	60	26.21	38	41.38	16	11.03
Bh	154	142	92.21	1	0.65	11	7.14	1	0.65	114	74.03	19	2.60	4	12.34	16	10.39
Dung	152	137	90.13	8	5.26	7	4.61	0	0.00	131	86.18	3	0.00	0	1.97	18	11.84
Jalo	152	148	97.37	4	2.63	0	0.00	1	0.66	100	65.79	36	6.58	10	23.68	5	3.29
Kota	151	144	95.36	5	3.31	2	1.32	0	0.00	74	49.01	57	9.93	15	37.75	5	3.31
Sri Gan	142	134	94.37	7	4.93	1	0.70	1	0.70	85	59.86	33	11.27	16	23.24	7	4.93
S. Madh	151	149	98.68	0	0.00	2	1.32	0	0.00	132	87.42	18	0.00	0	11.92	1	0.66
Total	1047	996	95.13	28	2.67	23	2.20	5	0.48	665	63.51	226	7.93	83	21.59	68	6.49

23 Honorarium paid for against these Other Works

SN	Name of the District	JMC Interviewed	Honorarium Received	Not Received	N/R	Total
1	Alwar	145	20	104	21	145
2	Bhilwara	154	44	83	27	154
3	Dungarpur	152	44	72	36	152
4	Jalore	152	8	139	5	152
5	Kota	151	62	77	12	151
6	Sri Ganganagar	142	26	115	1	142
7	S. Madhopur	151	47	81	23	151
	Total	1047	251	671	125	1047

3.13 Problems in the scheme

In the JM Programme governed by FW department has also some problem need to be addressed to make it effective, responsive and cost effective –

Common Problems

1. Low attendance of JMCs (Couples) in the meeting
2. Lack of Specific IEC /Counselling material
3. Selection of couple as JMC is an important. Age factor, illiteracy, and couple not using any method themselves, having more children can be shown as role model. During survey many couple were found those are not fulfilling the criteria and guidelines of state government
4. Timely payment of honorarium is the biggest issue raised as problem by respondents
5. Training and orientation- Training have been conducted under the scheme but still there is need to organised training for couples who have not attended the training. Reorientation is also required. Lack of training and orientation work is suffered.



Chapter -4

Observation and findings: Community response

To assess the impact of any scheme, community response is the most effective variable. Under this concurrent evaluation interview of beneficiaries or recipient of the services from JMCs is the key component identified as one of the informant for the research. Similarly the person living in the same society but not receiving the services of JMC have an important client to be interrogate so that it could be identified that why they are getting services or what view they have about the scheme, about the service provider especially the JMCs. As indicated in the table .3 Out of total 11387 respondents interviewed under the evaluation 10040 respondents were directly from community. Either they are beneficiary or non- beneficiary.

4.1 Education Status of Beneficiaries interviewed

S N	District	Beneficiaries	Education Status						
			Illiterate		Primary	Secondary	Sr. Secondary	Others	N/R
			B	(%)	B	B	B	B	B
1	Alwar	642	308	47.98	202	56	17	38	21
2	Bhilwara	654	344	52.60	202	55	20	7	26
3	Dungarpur	757	379	50.07	267	63	18	21	9
4	Jalore	710	508	71.55	156	26	6	3	15
5	Kota	733	361	49.25	233	55	14	51	19
6	Sri Ganganagar	694	218	31.41	275	113	40	44	4
7	S. Madhopur	730	534	73.15	110	29	6	0	51
	Total	4920	2652	53.90	1445	397	121	164	145

4.1 A. Education Status of non beneficiaries interviewed

S N	District	Non Beneficiaries	Education Status						
			Illiterate	Primary	Secondary	Sr. Secondary	Others		N/R
			NB	(%)	NB	NB	NB	NB	NB
1	Alwar	715	255	35.66	258	81	41	67	13
2	Bhilwara	691	370	53.55	202	68	17	8	26
3	Dungarpur	720	344	47.78	277	63	17	12	7
4	Jalore	770	459	59.61	194	61	28	5	19
5	Kota	741	264	35.63	224	100	23	113	17
6	Sri Ganganagar	747	262	35.07	295	119	32	22	17
7	S. Madhopur	736	515	69.97	127	48	5	0	41
	Total	5120	2469	48.22	1577	540	163	227	140

Community response was received from various categories of people. Highest number was from illiterate people 5121 people were illiterate among all Beneficiaries and non beneficiaries.

4.1 Knowledge about JMC couple/Scheme



SIHF: an ISO: 9001:2008 certified institution
Concurrent Evaluation of Janmangal Programme in Rajasthan

To assess the impact response from community was received, whether they are aware or not about Janmangal Couple or their services. As per the findings it important to note that about 50% respondents who are not directly benefited by JMCs were aware about the Janmangal Couples their services and the scheme. This is the key indicator to make an evidence that scheme is performing well in the field. Knowledge of beneficiary about the JMC quite clear as they are getting services from them so there is no question about the knowledge of JMC. Even then there are some of the respondents from beneficiaries who recorded that they not aware about JMC. It indicates that beneficiaries are getting services from person other than JMC. This may be ANM, LHV, ASHA Sahayogini or AWW. Table 4.2 indicates the situation in details.

4.2 Knowledge about JM-Couple – Beneficiaries

S N	District	Beneficiaries	Status of Knowledge about JMC and Programme					
			Aware		Not aware		N/R	
			B	(%)	B	(%)	B	(%)
1	Alwar	642	631	98.20	5	0.78	6	0.93
2	Bhil	654	635	97.09	12	1.83	7	1.07
3	Dunga	757	754	99.60	0	00.00	3	0.39
4	Jalore	710	698	98.30	10	1.41	2	0.28
5	Kota	733	732	99.86	1	0.14	0	0.00
6	Sri Gangan	694	646	93.08	5	0.72	43	6.19
7	S. Madh	730	712	97.53	5	0.68	13	1.78
	Total	4920	4808	97.72	38	0.77	74	1.50

4.2.1 Knowledge about JM-Couple – Non-Beneficiaries

S N	District	Non Beneficiaries	Status of Knowledge about JMC and Programme					
			Aware		Not aware		N/R	
			NB	(%)	NB	(%)	NB	(%)
1	Alwar	715	345	48.25	364	50.90	6	0.84
2	Bhil	691	576	83.35	107	15.48	8	1.16
3	Dunga	720	708	98.33	8	1.11	4	0.56
4	Jalore	770	235	30.51	524	68.05	11	1.42
5	Kota	741	277	37.38	463	62.48	1	0.13
6	Sri Gangan	747	234	31.32	460	61.57	53	7.09
7	S. Madh	736	131	17.79	595	80.04	10	1.36
	Total	5120	2506	48.94	2521	49.23	93	1.82



SIHF: an ISO: 9001:2008 certified institution
Concurrent Evaluation of Janmangal Programme in Rajasthan

Community representatives were also aware about the tasks and responsibilities of JMCs. Table 4.2 indicates that Info Dissemination on Spacing Methods, Distribution of Contraceptives, Motivation for ANC –PNC, Support in MCHN Days are the key tasks performed by JMCs. Knowledge of tasks of JMC among non beneficiaries as indicated in the table is an evidence that JMC are performing there duties with great volunteerism and dedication as they are not getting any encouraging financial support.

4.3 Types of services provided by JM-Couple

S N	District	Beneficiaries	Non Beneficiaries	Types of services provided									
				Info Dissemination on FP Methods		Distribution of Contraceptives		Motivation for ANC –PNC		Support in MCHN Days		All	
				B	NB	B	NB	B	NB	B	NB	B	NB
1	Alwar	642	715	588	243	588	53	96	45	5	0	0	1
2	Bhilwara	654	691	545	445	598	415	158	91	24	27	34	3
3	Dungarpur	757	720	703	503	719	436	199	157	36	25	14	8
4	Jalore	710	770	542	84	508	92	14	0	88	20	8	0
5	Kota	733	741	586	182	631	209	8	32	62	80	2	0
6	Sri Ganganagar	694	747	149	32	174	41	23	2	13	7	3	0
7	S. Madhopur	730	736	559	58	699	115	11	3	47	2	1	0
	Total	4920	5120	3671	1545	3912	1361	506	329	275	161	62	12

Table 4.4 indicates about the status of family of the respondents interrogated during the survey. About 60% respondents were having children either only one or two or currently expecting which indicates that community is aware at large about small family norms. 20 % were having children more than two and 20% have not shown any concern about their family size.

4.4 Status of Family size (Number of Children)

SN	District	Beneficiaries	Non Beneficiaries	Status of Family size									
				Currently Preg		One		Two		More than 2		N/R	
				B	NB	B	NB	B	NB	B	NB	B	NB
1	Alwar	642	715	19	128	107	120	205	160	266	242	45	65
2	Bhilwara	654	691	8	94	131	140	176	127	276	261	58	69
3	Dungarpur	757	720	9	56	122	130	152	150	98	94	376	290
4	Jalore	710	770	20	76	87	120	203	150	376	360	31	64
5	Kota	733	741	8	158	156	170	291	199	260	186	19	28
6	Sri Ganganagar	694	747	44	81	62	73	51	52	62	72	475	469
7	S. Madhopur	730	736	19	97	100	126	228	182	352	242	31	89
	Total	4920	5120	127	690	765	879	1306	1020	1690	1457	1035	1074

4.2 Knowledge about Contraception / limiting the family size

Community response about knowledge of contraceptives and their different methods and use is interesting to note. Among beneficiaries 88.80% percent were aware about different methods



SIHFW: an ISO: 9001:2008 certified institution
Concurrent Evaluation of Janmangal Programme in Rajasthan

whereas 74.90% among non beneficiaries were aware. Table 4.5 and 4.6 indicates the details of knowledge about different types of contraceptives among community representatives

4.5. Knowledge about Spacing Methods

SN	District	Beneficiaries	Non Beneficiaries	Knowledge about Spacing Methods							
				Aware		Not aware		N/R		Total	
				B	NB	B	NB	B	NB	B	NB
1	Alwar	642	715	637	674	2	33	3	8	642	715
2	Bhilwara	654	691	650	587	1	80	3	24	654	691
3	Dungarpur	757	720	754	700	0	12	3	8	757	720
4	Jalore	710	770	697	546	6	201	7	23	710	770
5	Kota	733	741	722	604	1	134	10	3	733	741
6	Sri Ganganagar	694	747	191	210	1	41	502	496	694	747
7	S. Madhopur	730	736	718	514	5	209	7	13	730	736
	Total	4920	5120	4369	3835	16	710	535	575	4920	5120

4.3 Source of information

During interview community representatives (both beneficiaries and non beneficiaries) were asked about the source of information received from whom about contraceptive methods. This information is imparted by peers, ANM, AWW, ASHA-Sahyogini and JMC. Contribution of JMC in this aspect is quite high. Out of total beneficiaries interviewed 84.20% were informed by JMCs about spacing methods. In non beneficiaries this number is recorded as 38.16% that indicates that services of JMC are effective and fruitful.

4.6. Types of Contraceptive (Beneficiaries)

SN	District	Beneficiaries	Types of Contraceptive						
			Condom	OP	Copper-T	E Pills	Permanent Methods	Not at All	N/R
			B	B	B	B	B	B	B
1	Alwar	642	640	606	187	42	117	0	2
2	Bhilwara	654	610	596	152	16	164	3	5
3	Dungarpur	757	676	713	265	22	149	2	1
4	Jalore	710	532	599	119	42	163	4	3
5	Kota	733	717	695	194	22	161	0	13
6	Sri Ganganagar	694	195	187	82	13	45	0	495
7	S. Madhopur	730	716	692	66	15	161	0	10
	Total	4920	4086	4088	1065	172	960	9	529

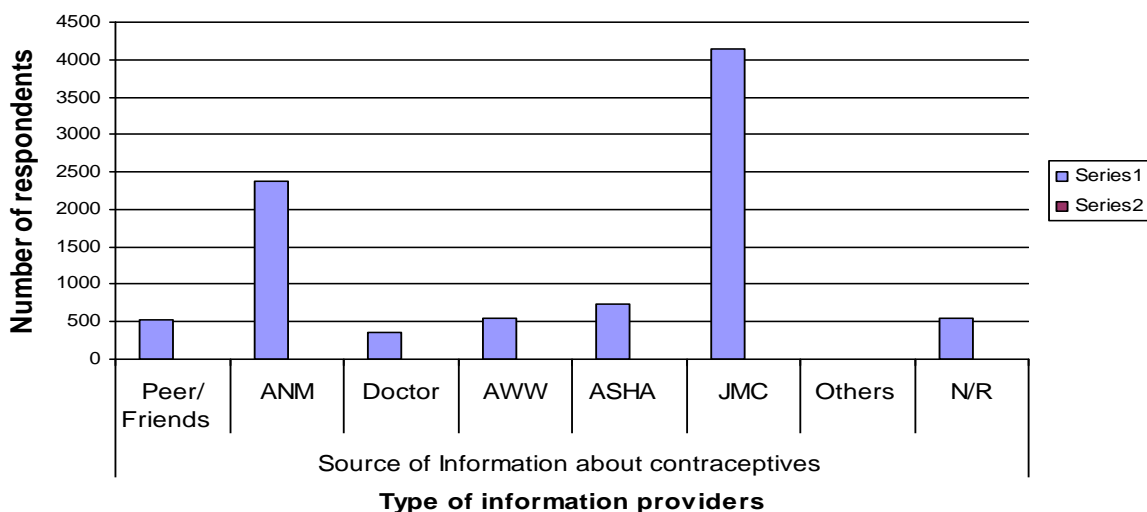
4.6. Types of Contraceptive (Non- Beneficiaries)



SIHFW: an ISO: 9001:2008 certified institution
Concurrent Evaluation of Janmangal Programme in Rajasthan

SN	District	Non Beneficiaries	Types of Contraceptive						
			Condom	OP	Copper-T	E Pills	Permanent Methods	Not at All	N/R
			NB	NB	NB	NB	NB	NB	NB
1	Alwar	715	670	626	155	58	186	0	43
2	Bhilwara	691	546	551	132	16	143	38	82
3	Dungarpur	720	606	641	217	13	162	2	47
4	Jalore	770	511	374	188	81	230	40	121
5	Kota	741	601	585	185	28	247	0	136
6	Sri Ganganagar	747	217	201	82	16	50	0	529
7	S. Madhopur	736	507	431	68	27	130	1	227
	Total	5120	3658	3409	1027	239	1148	81	1185

Source of information about contraceptives





SIHFW: an ISO: 9001:2008 certified institution
Concurrent Evaluation of Janmangal Programme in Rajasthan



SIHFW: an ISO: 9001:2008 certified institution
Concurrent Evaluation of Janmangal Programme in Rajasthan

S N	District	Benefi ciarie s	Source of Information about contraceptives															
			Peer/ Friends		ANM		Doctor		AWW		ASHA		JMC		Others		N/R	
			B	(%)	B	(%)	B	(%)	B	(%)	B	(%)	B	(%)	B	(%)	B	(%)
1	Alwar	642	127	19.77	303	47.20	17	2.65	31	4.83	95	14.80	598	93.14	0	0.00	1	0.15
2	Bhilwara	654	44	6.73	381	58.26	15	2.28	106	16.21	193	29.50	615	94.03	3	0.45	7	1.07
3	Dung	757	21	2.76	474	62.61	26	3.42	60	7.93	215	28.40	736	97.22	3	0.39	8	1.05
4	Jalore	710	86	12.10	404	56.90	206	29.00	191	26.9	111	15.62	625	88.02	2	0.28	11	1.54
5	Kota	733	145	19.77	403	54.98	43	5.87	87	11.87	64	8.7	699	95.36	1	0.13	12	1.63
6	Sri Gang	694	58	8.36	117	16.86	23	3.30	22	3.16	33	4.75	171	24.63	0	0.00	497	71.6
7	S. Madh	730	48	6.57	288	39.44	29	3.96	47	6.44	22	3.00	699	95.75	0	0.00	13	0.17
	Total	4920	529	10.74	2370	48.16	359	7.29	544	11.06	733	14.90	4143	84.20	9	0.18	549	11.15

4.7 Source of Information about contraceptives(Beneficiaries)

4.7 Source of Information about contraceptives (Non- Beneficiaries)

SN	District	Non Beneficiari es	Source of Information about contraceptives															
			Peer/ Friends		ANM		Doctor		AWW		ASHA		JMC		Others		N/R	
			NB	(%)	NB	(%)	NB	(%)	NB	(%)	NB	(%)	NB	(%)	NB	(%)	NB	(%)
1	Alwar	715	259	36.21	368	51.47	44	6.14	45	6.28	95	13.57	313	43.77	0	0.86	59	8.25
2	Bhilwara	691	51	7.37	363	52.52	23	3.33	85	12.29	193	23.00	490	70.91	6	0.13	109	15.70
3	Dungarpur	720	25	3.46	373	51.80	32	4.43	58	8.05	215	23.60	588	81.66	1	1.687	88	12.22
4	Jalore	770	164	21.30	328	42.59	241	31.29	131	17.00	111	5.57	152	19.74	13	0.13	120	15.58
5	Kota	741	355	47.91	402	54.24	95	12.81	88	11.87	64	4.59	246	33.19	1	0.94	146	19.70
6	Sri Ganganagar	747	106	14.81	152	20.35	50	6.68	32	4.27	33	1.61	50	6.69	0	0.00	538	72.02
7	S. Madhopur	736	155	21.06	285	38.72	83	11.28	36	4.88	22	2.44	115	15.62	24	3.26	235	31.92
	Total	5120	1115	21.78	2271	44.35	568	11.08	475	9.28	733	10.40	1954	38.16	51	0.99	1295	25.29



4.4 Use of Contraceptive

At the time of interview community representatives were asked about the use of spacing method currently for family planning. As per the findings both beneficiaries and non beneficiaries were using the spacing methods. The non beneficiaries using the method were either they were opted the permanent method or they were getting spacing methods from service provider other than JMC. As per finding out of total beneficiaries 50.18 % were using condom, 36.5 % using Oral Pills and 1.05% were using Copper-T, rest were on permanent methods. This finding provides evidence of active service of JMCs.

Users were also asked about the availability of methods as per their choice. Table 4.9 shows that 85.60 user have facility to receive the spacing methods as per their choice. Alternative methods were also suggested by JMCs to the couple as per 54.61% respondents.

4.8. Types of Contraceptive being used by respondents ((Beneficiaries)

SN	District	Benefic	Types of Contraceptive					N/R
			Condom	OP	Copper-T	E Pills	Perm. Methods	
1	Alwar	642	484	138	0	0	2	20
2	Bhilwara	654	320	309	9	0	2	22
3	Dungarpur	757	337	395	22	1	1	15
4	Jalore	710	269	385	6	0	16	21
5	Kota	733	434	279	5	0	0	16
6	S. Ganganagar	694	129	51	9	0	0	505
7	S. Madhopur	730	496	217	1	0	1	15
	Total	4920	2469	1774	52	1	22	614

4.9. Availability of Spacing Method as per choice and Alternative if Not available by JMC

SN	District	Beneficiaries	Availability of Spacing Method			Alternative suggested if Not available		
			Yes	No	N/R	Yes	No	N/R
1	Alwar	642	624	4	14	521	38	83
2	Bhilwara	654	613	6	35	394	17	243
3	Dungarpur	757	703	29	25	489	21	247
4	Jalore	710	667	15	28	379	288	43
5	Kota	733	709	0	24	398	310	25
6	Sri Ganganagar	694	185	4	505	147	42	505
7	S. Madhopur	730	711	3	16	359	200	171
	Total	4920	4212	61	647	2687	916	1317

4.5 Reason for not using the spacing or FP Methods

Non beneficiaries were interrogated about the reason of not using the modern methods of contraceptives. As the findings shown in table 4.10 only 1.42 % respondents were given the answer of non availability of contraceptives whereas 5.1% couples were not using any method due to fear. Lack of knowledge is also one of the reasons for non acceptance of spacing methods (4.29%).

Traditional method of contraception is also found in use. Out of total 5120 non beneficiary respondents 16.48% were not using the modern methods because they preferring the traditional methods.

4.10. Reason for not using the spacing or FP Methods

S N	District	No of Non Beneficiari es	Reason for not using the spacing or FP Methods					
			Currently Preg	Using traditio nal Method s	Non availability of Spacing Methods	Fear in using the methods	Lack of Knowledge	N/R
			NB	NB	NB	NB	NB	NB
1	Alwar	715	165	139	44	17	16	336
2	Bhilwara	691	115	51	3	70	6	456
3	Dungarpur	720	91	56	2	76	4	496
4	Jalore	770	42	137	8	25	72	325
5	Kota	741	133	123	4	35	51	401
6	Sri Ganganagar	747	49	53	7	25	16	615
7	S. Madhopur	736	75	285	5	55	55	288
	Total	5120	670	844	73	303	220	2917

Tab. 4.10 is also providing the evidence that service of JMC not at the fault when the non beneficiaries are not using the spacing methods. At matter of information dissemination can contribute to motivate the person those have fear in the mind about the use of methods and those who were totally blank about the information of methods but JMC only cannot be responsible for this part. ANM is equally responsible.

4.6 Behaviour of JMC in the Community

As a volunteer or social worker, behaviour of JMC has great importance in motivating community for the acceptance of spacing methods. Community representatives were interrogated about the behaviour of the JMCs. Findings on this issue are shown in the table 4.11. Out of total Beneficiaries 71.48% were found the behaviour of JMC is good whereas 68.63% non beneficiaries those were aware about the JMCs found the behaviour of them good.

4.11 Behaviour of JM Couple

S N	District	Benef.	Non Bene	Behaviour of JM Couple									
				Good		Bad		General		Don't No		N/R	
				B	NB	B	NB	B	NB	B	NB	B	NB
1	Alwar	642	715	481	310	0	1	134	32	12	286	15	86
2	Bhilwara	654	691	620	491	0	3	20	65	8	106	6	26
3	Dungarpur	757	720	651	516	1	4	84	137	2	42	19	21
4	Jalore	710	770	456	106	1	1	240	107	12	428	1	128
5	Kota	733	741	579	183	1	0	142	76	4	369	7	113
6	S. Ganganagar	694	747	114	41	0	1	80	16	0	155	500	534
7	S. Madhopur	730	736	616	73	1	1	89	44	9	466	15	152
	Total	4920	5120	3517	1720	4	11	789	477	47	1852	563	1060

4.7 Community Awareness on ASHA-Sahyogini

Under NRHM, ASHA Sahayogni have been introduced as link worker at each AWC level. These ASHA – Sahyogini are also supposed to provide the services of FP to the eligible couples. Community response on the knowledge about Asha –Sahyogini is shown in table 4.12. As per the findings 25.56 % beneficiaries and 33.53% non beneficiaries were aware about ASHA –Sahyogini of there village. Rest were not aware.

4.12. Knowledge about Asha - Sahyogini



SIHFV: an ISO: 9001:2008 certified institution
Concurrent Evaluation of Janmangal Programme in Rajasthan

SN	District	Beneficiaries	Non Benefi	Status of Knowledge about JMC and Programme					
				Aware		Not aware		N/R	
				B	NB	B	NB	N	NB
1	Alwar	642	715	126	156	512	549	4	10
2	Bhilwara	654	691	65	105	588	582	1	4
3	Dungarpur	757	720	0	0	757	720	0	0
4	Jalore	710	770	199	312	441	364	70	94
5	Kota	733	741	449	599	284	142	0	0
6	Sri Ganganagar	694	747	0	0	679	739	15	8
7	S. Madhopur	730	736	419	545	306	186	5	5
	Total	4920	5120	1258	1717	3567	3282	95	121

On the issue of functions of ASHA –Sahyogini as service provider of FP methods or communicator or counsellor on these matters community representatives were also interrogated. As per the findings Out of total 1258 aware beneficiaries about the scheme 862 were gave the opinion that she providing the spacing methods to couples also. Only 292 non- beneficiaries accept about this service of Asha sahyogini. Same response is received on communication and counselling services or in other words about awareness generation. Detailed is shown in Table 4. 13

4.13. If yes then she (ASHA- Sahyogini) provides FP Methods and its Knowledge

SN	District	Beneficiaries	Availability of Spacing Method			Knowledge about FP Methods		
			Yes	No	N/R	Yes	No	N/R
1	Alwar	642	20	400	222	119	303	220
2	Bhilwara	654	156	296	202	264	184	206
3	Dungarpur	757	173	449	135	363	249	145
4	Jalore	710	249	125	336	266	116	328
5	Kota	733	115	166	452	256	30	447
6	Sri Ganganagar	694	56	78	560	112	116	466
7	S. Madhopur	730	93	273	364	195	171	364
	Total	4920	862	1787	2271	1575	1169	2176

4.13. If yes then she (ASHA- Sahyogini) provides FP Methods and its Knowledge

SN	District	Non Benef.	Availability of Spacing Method			Knowledge about FP Methods		
			Yes	No	N/R	Yes	No	N/R
1	Alwar	715	6	243	466	98	151	466
2	Bhilwara	691	68	251	372	192	130	369
3	Dungarpur	720	69	416	235	250	194	276
4	Jalore	770	61	161	548	113	115	542
5	Kota	741	58	19	664	62	14	665
6	S. Ganganagar	747	11	21	715	22	10	715
7	S. Madhopur	736	19	117	600	111	25	600
	Total	5120	292	1228	3600	848	639	3633

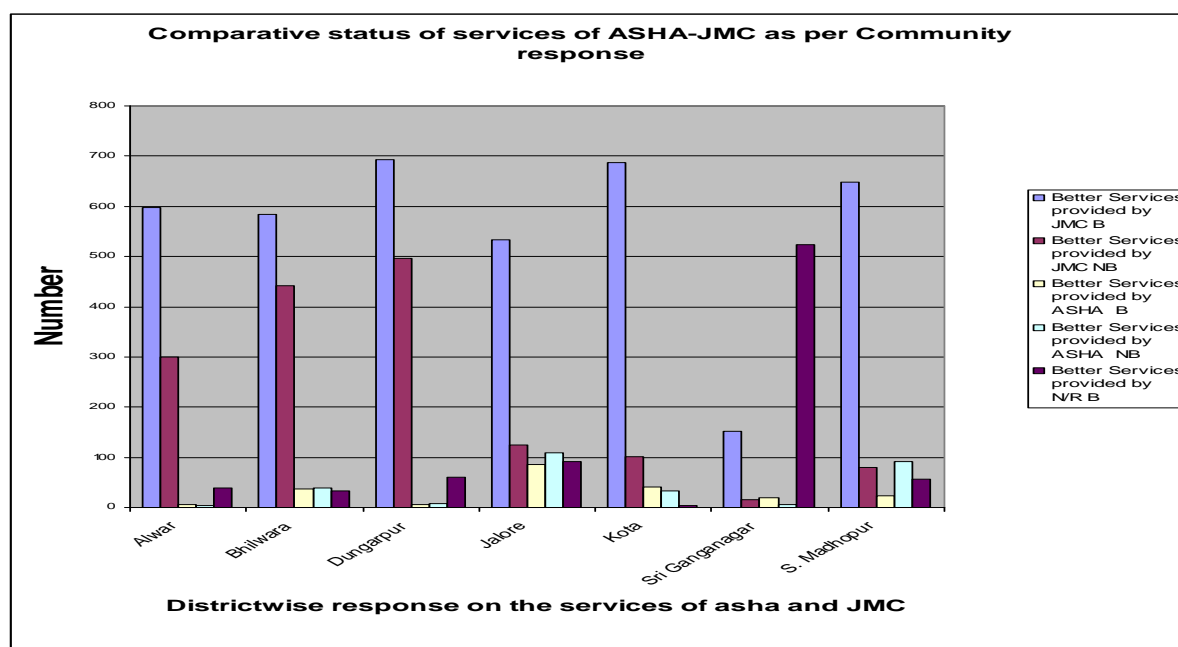


4.8 Comparison of FP services of JMC and Asha- Sahyogini

Community representatives were interrogated on the issue of service quality. Out of total beneficiaries interrogated 79.14% were found JMC better whereas non beneficiaries were only 30.46% in favour of JMC as better service provider. No doubt both are community worker but have importance in their own field. ASHA is known as JSY motivator whereas JMC is FP method provider. One cannot replace other.

15 Who provides Better Services?

SN	District	Beneficiaries	Non Beneficiaries	Better Services provided by					
				JMC		ASHA		N/R	
				B	NB	B	NB	B	NB
1	Alwar	642	715	598	300	5	4	39	411
2	Bhilwara	654	691	583	441	37	38	34	212
3	Dungarpur	757	720	692	497	5	7	60	216
4	Jalore	710	770	533	125	85	109	92	536
5	Kota	733	741	688	102	41	33	4	606
6	Sri Ganganagar	694	747	151	16	19	6	524	725
7	S. Madhopur	730	736	649	79	24	92	57	565
	Total	4920	5120	3894	1560	216	289	810	3271





Chapter -5

Observation and findings: Management response

(1.ANM)

Under the evaluation manger of all level from Sub centre level to State level were interrogated. A mix response was received from this segment. Total 237 ANMs were interrogated from all the 7 districts. Total 182095 eligible couples were registered in a ELA of 2007-8. Detailed of ELA is shown in table 5.1

5.1. ELA of the Sub Centre

Sn	Name of the District	Total Number of ANMs	Total Number of Eligible Couples	Targeted Number of Couples for	Targeted Number of Couples for	
				For Spacing Methods	Permanent Methods	
					Male	Female
1	Alwar	22	26640	754	42	454
2	Bhilwara	26	16759	2093	208	646
3	Dungarpur	59	30184	2458	45	854
4	Jalore	35	18865	3226	60	500
5	Kota	32	34530	7219	526	1847
6	Sri Ganganagar	28	32335	2766	36	1122
7	S. Madhopur	35	22782	7214	9	939
	Total	237	182095	25730	926	6362

5.1 Service tenure of ANMs at Sub Centre

As per findings 24.47% ANMS were spent less than 1 year at the current sub centre. They were least aware about JMC service providers where as 29.95 % were stayed their present place of posting more then 8 years. Experience wise they were good.

5. 2 working experience as ANM in this sub centre

Sn	Name of the District	Less than one year	1-2 Yrs	2-3 Years	3-5 Years	5-8 Years	More than 8 Yrs	Total
1	Alwar	8	1	2	3	2	6	22
2	Bhilwara	6	2	2	1	5	10	26
3	Dungarpur	15	7	12	5	6	14	59
4	Jalore	4	4	1	4	8	14	35
5	Kota	8	4	2	4	7	7	32
6	Sri Ganganagar	8	0	1	5	3	11	28
7	S. Madhopur	9	1	2	3	11	9	35
	Total	58	19	22	25	42	71	237

In 237 Sub centres from where ANMs were interrogated 800JMC couples were registered. Out of them 700 (87.5%) were trained. Some JMC were removed from their work due to their regular absenteeism in



SIHFV: an ISO: 9001:2008 certified institution
Concurrent Evaluation of Janmangal Programme in Rajasthan

the meetings. Number of such JMC was 144. In place of these removed 144 JMCs 105 were selected as new JMCs. In all 237 Sub Centres 119 Village were with out JMCs.

5.3. Total Number of JMC at Sub enters

Sn	Name of the District	Total Number of ANMs/	Total Number of JMCs	trained JMC	Un trained JMC	JMC removed due to absenteeism in Meeting	No of JMC newly selected	Number of Villages With out JMC
1	Alwar	22	68	59	9	8	4	8
2	Bhilwara	26	94	75	19	21	11	10
3	Dungarpur	59	136	108	26	25	16	14
4	Jalore	35	80	69	11	16	8	2
5	Kota	32	180	172	8	37	31	41
6	Sri Ganganagar	28	141	118	23	8	19	19
7	S. Madhopur	35	101	99	2	29	16	25
	Total	237	800	700	98	144	105	119

5.4. Status of Service by JMCs at Sub centre

Sn	Name of the District	Number of ANMs/	Average Number of Couples served	Status of Millan Meetings		
				Average attendance in the Meeting by Couple	Average attendance in the Meeting by only wife/husband	Average attendance in the Meeting irregularly
1	Alwar	22	10.90	0.77	0.13	0.09
2	Bhilwara	26	18.5	0.92	0.0	0.076
3	Dungarpur	59	14.81	0.93	0.05	0.019
4	Jalore	35	8.05	0.88	0.057	0.028
5	Kota	32	24.09	0.96	0.0	0.03
6	Sri Ganganagar	28	8.64	0.71	0.14	0.035
7	S. Madhopur	35	16.7	0.88	0.07	0.0
	Total	237				

5.2 Demand of Spacing Methods

Out of total 237 ANMs interviewed 37 were replied that they themselves inquired from JMC about the demand and then ensure the supply whereas 76% ANMs received demand from JMCs. Most of the ANMs were aware about the responsibilities of JMCs except 16. Responsibilities of JMCs reported by ANMs were:-

- Listing of Eligible Couple and Contact them
- Information about spacing methods to the Couples and distribution
- Awareness and motivation
- Counselling

5.5 Demand of Contraceptives

S n	Name of the District	Total Number of ANM Interviewed	Received regularly from JMCs	Some times	ANM herself enquired about the demand and ensure the supply	N/R
1	Alwar	22	17	0	3	2

2	Bhilwara	26	23	1	2	0
3	Dungarpur	59	44	2	11	2
4	Jalore	35	28	1	6	0
5	Kota	32	27	3	2	0
6	Sri Ganganagar	28	16	0	9	3
7	S. Madhopur	35	26	5	4	0
	Total	237	181	12	37	7

5. 6 Knowledge of ANM about role and responsibility of JMC

S n	Name of the District	Number of ANM Interviewed	Listing of Eligible Couple and Contact them	Information about spacing methods to the Couples and distribution	Awareness and motivation	Counseling	Other	N/R
1	Alwar	22	22	21	22	21	0	0
2	Bhilwara	26	21	25	20	14	2	1
3	Dungarpur	59	47	50	46	44	9	9
4	Jalore	35	25	33	19	23	1	2
5	Kota	32	24	31	16	10	10	1
6	Sri Ganganagar	28	18	26	12	17	0	2
7	S. Madhopur	35	17	31	19	13	1	1
	Total	237	174	217	154	142	23	16

ANMS were also agreed about the other supplementary works performed by JMCs . Support in pulse polio drive, *Swasthya chetna yatra*, social awareness on national Health Programmes, motivation to the couples for sterilization are some of the tasks performed by JMCs as per opinion of ANMs detailed is shown in table 5.7

5.7 Other works performed by JMC as per ANM

S n	Name of the District	ANM Interviewed	Support in Pulse Polio	Swasthya Chetna Yatra	Social Awareness for NHP	Motivation to the couples for sterilization	Other	N/R
1	Alwar	22	15	7	7	7	6	1
2	Bhilwara	26	26	19	21	21	0	0
3	Dungarpur	59	48	38	38	36	4	7
4	Jalore	35	26	8	10	26	2	3
5	Kota	32	28	18	14	20	2	0
6	Sri Ganganagar	28	25	4	2	3	3	0
7	S. Madhopur	35	30	8	10	17	2	1
	Total	237	198	102	102	130	19	12

5.3 Views on Honorarium to JMCs

Out of Total ANMs interviewed 85 (35.86%) told that honorarium is not being paid to JMC on time (regular in each meeting). Rest were agreed that honorarium is being paid regularly in each meeting.

5.8 Status of Honorarium being received by JMCs as per ANM

S n	Name of the District	ANM Interviewed	By monthly in each meeting	Not regular in each meeting	Once in a year	N/R
1	Alwar	22	2	10	8	2
2	Bhilwara	26	14	12	0	0
3	Dungarpur	59	41	2	0	16
4	Jalore	35	7	26	2	0
5	Kota	32	12	15	2	3
6	Sri	28	14	11	2	1

	Ganganagar					
7	S. Madhopur	35	26	9	0	0
	Total	237	116	85	14	22

5.4 Views on Honorarium to JMCs

Implementation of JMC scheme is not directly governed by ANM in the field. Their role is limited to the selection of JMCs reporting of the programme is directly given to PhDs but ANMs are the only link between MO and JMC. ANMs are well aware about problems of the scheme. In their opinion various administrative and financial matters are need to be addressed to improve the scheme. Lacking in monitoring system, irregular meetings, lack of motivation among JMCs, introduction of ASHA Sahayogini has created the duplication are some of the issue raised by ANMs as problem in the implementation of scheme. Detailed is shown in table 5.9

5.9. Problems in implementation of Scheme

S n	Name of the District	ANM Intervi ewed	List of problems							
			Irreg ular Pay ment of Hon.	Supply of material irregular	Lack of Motivat ion in JMC	Meetin gs not held regularl y	Lack of intere st of MO	Lackin g in Monito ring Syste m	Not relevant as ASHA – Sahyogini in action	N/R
1	Alwar	22	17	0	0	0	0	0	0	5
2	Bhilwara	26	11	0	3	0	2	2	3	13
3	Dungarpur	59	6	0	0	1	1	2	9	42
4	Jalore	35	9	1	4	1	2	5	1	22
5	Kota	32	17	0	5	2	6	0	4	13
6	Sri Ganganag ar	28	11	0	4	0	0	1	0	14
7	S. Madhopur	35	8	0	6	0	0	2	0	22
	Total	237	79	1	22	4	11	12	17	131

5.5 ASHA-Sahyogini V/s JMC

As per the findings reported from ANMs interviewed, there were 731 ASHA were working in 237 sub centres. In these sub Centres 203 JMC were selected as ASHA –Sahyogini. Out of total ANMs 77.21% found JMC scheme relevant even after introduction of Asha Sahyogini. In their opinion JMCs has specific role in reducing the TFR but have broader roles and responsibility in which FP programme gets least priority. Table 5.11 shows detailed view.

5.10 Knowledge about ASHA Sahyogini

S N	Name of the District	Total Number of ANM Interviewed	Number of ASHA Sahyogi	No of JMC selected as ASHA
1	Alwar	22	59	6
2	Bhilwara	26	80	16
3	Dungarpur	59	123	5
4	Jalore	35	43	58
5	Kota	32	200	36
6	Sri Ganganagar	28	155	56
7	S. Madhopur	35	71	26
	Total	237	731	203



SIHFW: an ISO: 9001:2008 certified institution
Concurrent Evaluation of Janmangal Programme in Rajasthan

5.11 Relevance of scheme after introducing the ASHA –Sahyogini Scheme

S N	Name of the District	No of ANM Interviewed	Yes	No	N/R
1	Alwar	22	15	0	7
2	Bhilwara	26	23	3	0
3	Dungarpur	59	46	7	6
4	Jalore	35	30	5	0
5	Kota	32	24	8	0
6	Sri Ganganagar	28	15	4	0
7	S. Madhopur	35	30	13	1
	Total	237	183	40	14



Chapter -6

Observation and findings: Management response

(2. Medical Officer- PHC)

As narrated in chapter one Medical Officer were included in the sample of survey under this evaluation. Out of total covered PHCs 43 Medical officers were interrogated. Rest were couldn't be interrogated because of their absence at PHC during the time of survey. Out of total surveyed PHCs (43) as per the report of MOs there 219036 eligible couples were registered. Out of them 46773 were for spacing method and rest were for sterilization.

5.2.1. ELA of the Sub Centre

Sn	Name of the District	Total Number of MO/PHC Covered	Total Number of Eligible Couples	Targeted Number of Couples for	Targeted Number of Couples for	
				For Spacing Methods	Sterilization	
					Male	Female
1	Alwar	4	32292	1284	60	530
2	Bhilwara	7	16995	3293	42	360
3	Dungarpur	5	17071	3480	14	3495
4	Jalore	7	27801	4984	54	397
5	Kota	6	20277	4824	141	1277
6	Sri Ganganagar	7	57199	17407	213	292
7	S. Madhopur	7	47401	11501	0	1899
	Total	43	219036	46773	524	8250

Working experience of MOs was also recorded during the survey highest number was less than one year. Experience at the same institution can be considered for better information of the field and the implementation of scheme. A new MO cannot be expected to know about the progress of JMC which generally considered the least priority programme for them in comparison to JSY, sterilization or pulse polio.

5.2.2 Working experience as MO in this PHC

Sn	Name of the District	Less than one year	1-2 Yrs	2-3 Years	3-5 Years	5-8 Years	More than 8 Yrs	Total
1	Alwar	1	1	0	1	1	0	4
2	Bhilwara	2	0	2	1	1	1	7
3	Dungarpur	3	1	0	1	0	0	5
4	Jalore	1	3	1	0	0	2	7
5	Kota	3	0	1	0	0	2	6
6	Sri Ganganagar	3	1	2	0	1	0	7
7	S. Madhopur	3	1	0	1	1	1	7
	Total	16	7	6	4	4	6	43

As per the findings emerged from the responses of MO, there 1101 JMC were functional in total 43 PHCs. Out of total 891 were trained. As per this finding about 19.07% JMC were still untrained in the field. Some of the JMC were removed due to absenteeism in the meeting and new JMC have been appointed to replace them.

5.2.3. Total Number of JMC at PHC

Sn	Name of the District	PHC Covered	Total Number of JMCs	trained JMC	Un trained JMC	JMC removed due to absenteeism in Meeting	Number of JMC newly selected
1	Alwar	4	145	132	13	8	9
2	Bhilwara	7	223	152	71	10	5
3	Dungarpur	5	105	78	27	27	24
4	Jalore	7	114	69	45	13	8
5	Kota	6	147	95	52	50	3

6	Sri Ganganagar	7	181	179	2	30	12
7	S. Madhopur	7	186	186	0	6	6
	Total	43	1101	891	210	144	67

Opinion of MOs was collected on various issues to assess the information of MO on the scheme. Regarding selection of JMC, 79% MO were aware about the process but rest 21% were not clear about the responsibility of selection of JMC is designated to whom. All the MO, who were interrogated during the survey were aware about the training of JMCs and out of total 62 were involved in the training as trainer or as administrator (Table 5.2.5.) MO those were participated in the training as trainer took session on various subjects as indicated in the table

5.2. 4. Selection of JMCs done by

Sn	Name of the District	Total Number of MO/PHC Covered	CMHO	Deputy CMHO	MO	LHV/ANM	Panchayat	Other
1	Alwar	4	0	0	0	4	0	0
2	Bhilwara	7	0	0	0	6	2	0
3	Dungarpur	5	0	0	1	4	0	2
4	Jalore	7	0	1	1	6	0	0
5	Kota	6	1	1	2	2	0	1
6	Sri Ganganagar	7	0	1	1	6	0	0
7	S. Madhopur	7	0	0	2	6	0	0
	Total	43	1	3	7	34	2	3

5.2.5. Trainers of JMCs Training and participation in the Training

Sn	Name of the District	Total Number of MO/PHC Covered	Participation in the Training		Role of MO during the trainer	
			yes	No	Trainer	Administrator
1	Alwar	4	4	0	4	0
2	Bhilwara	7	2	5	2	0
3	Dungarpur	5	4	1	2	2
4	Jalore	7	3	4	3	0
5	Kota	6	3	3	2	1
6	Sri Ganganagar	7	6	1	3	3
7	S. Madhopur	7	5	2	4	1
	Total	43	27	16	20	7

5.2.6 Role of MO as Resource Person in the Training

Sn	Name of the District	No of MO interviewed	MO Participated a trainer	Sessions Facilitated					
				Spacing Methods	Counseling skills	NHP	HIV/AIDS	All	Other
1	Alwar	4	4	2	2	2	2	4	0
2	Bhilwara	7	2	2	0	2	1	0	1
3	Dungarpur	5	4	2	1	0	0	1	0
4	Jalore	7	3	2	0	2	1	1	0
5	Kota	6	3	1	1	0	0	1	0
6	Sri Ganganagar	7	6	4	2	3	1	4	0
7	S. Madhopur	7	5	2	1	1	1	3	0
	Total	43	27	15	7	10	6	14	1

Attendance in the Millan meeting was also accepted by respondent MOs. Different type of responsibilities are being performed by them during the training. Supervisory meetings are also conducted by MO as they admitted during the survey. But no JMC or ANM or other staff members gave any consent on this



SIHFW: an ISO: 9001:2008 certified institution
Concurrent Evaluation of Janmangal Programme in Rajasthan

issue. Some MOs were said (off the record) that they don't find time to undertake visit to see the performance of the JMCs.



SIHFW: an ISO: 9001:2008 certified institution
Concurrent Evaluation of Janmangal Programme in Rajasthan

5.2.7 Attendance in the Millan Meetings and Their Role

Sn	Name of the District	MO interviewed	Meeting attended	Role of MO during the Millan Meeting			
				Counselor	Health Educator	Evaluator	Observer
			Yes				
1	Alwar	4	4	3	1	0	0
2	Bhilwara	7	7	3	4	4	1
3	Dungarpur	5	5	1	4	0	0
4	Jalore	7	7	4	5	2	5
5	Kota	6	6	5	4	6	2
6	Sri Ganganagar	7	7	6	4	2	2
7	S. Madhopur	7	7	5	1	3	1
	Total	43	43	27	23	17	11

5.2.8. Average Number of Supervisory visits conducted by MO

Sn	District	MO/PHC Covered	Number of Visits			
			None	Up to 4	5-7	More
1	Alwar	4	1	3	0	0
2	Bhilwara	7	0	5	2	0
3	Dungarpur	5	1	0	0	4
4	Jalore	7	1	1	4	1
5	Kota	6	1	4	1	0
6	Sri Ganganagar	7	0	4	1	2
7	S. Madhopur	7	1	6	0	0
	Total	43	5	23	8	7

Regarding logistic and supply of the spacing methods MO were give the opinion that there no any short supply. This supply is being done regularly from regular stock of PHC. Demand generally received from JMCs during the meeting. Some time it received from ANM also. Most of the MO were aware about the role and responsibilities of the JMCs.

5.2.9 Demand of Contraceptives

Sn	Name of the District	Total Number of MO Interviewed	Received regularly from JMCs	Received through ANM	Some times	MO him/ herself enquired about the demand and ensure the supply
1	Alwar	4	2	1	0	1
2	Bhilwara	7	5	1	0	3
3	Dungarpur	5	1	4	0	0
4	Jalore	7	5	5	1	1
5	Kota	6	5	2	0	2
6	Sri Ganganagar	7	4	5	0	0
7	S. Madhopur	7	4	3	0	1
	Total	43	26	21	1	8

5.2.10 Knowledge of MO about role and responsibility of JMC

Sn	Name of the District	Total Number of MO Interviewed	Listing of Eligible Couple and Contact them	Information about spacing methods to the Couples and distribution	Awareness and motivation	Counselling
1	Alwar	4	4	4	2	0
2	Bhilwara	7	3	7	6	3
3	Dungarpur	5	1	4	2	1
4	Jalore	7	6	7	5	3
5	Kota	6	5	6	2	2
6	Sri	7	5	7	4	3



SIHFW: an ISO: 9001:2008 certified institution
Concurrent Evaluation of Janmangal Programme in Rajasthan

	Ganganagar					
7	S. Madhopur	7	6	7	5	5
	Total	43	30	42	26	17

Opinion on payment of honorarium was received mix. 50% were found it satisfactory. As per their opinion it is being paid regularly in each meeting but rest 50 % were accept the delay in the payment. Most of the MO found this scheme is depend on motivation of JMCs which is lacking. But in other hand MO are found least interest in the programme. The information received from the MO was practically given by LHV. About 900 ASHA –Sahyoginis are working in all the 43 PHC where MO were interviewed. Out 900 Asha-Sahayogini 44 were selected from JMCs.

5.2.11 Status of Honorarium being received by JMCs as per MO

S n	Name of the District	Total Number of MO Interviewed	By monthly in each meeting	Not regular in each meeting	Once in a year
1	Alwar	4	0	3	1
2	Bhilwara	7	1	6	0
3	Dungarpur	5	5	0	0
4	Jalore	7	3	4	0
5	Kota	6	3	3	0
6	Sri Ganga	7	4	3	0
7	S. Madhopur	7	5	2	0
	Total	43	21	21	1

5.2.12. Problems in implementation of Scheme

S n	Name of the District	MO Interviewed	List of problems						
			Irregular Payment of Hon.	Supply of material irregular	Lack of Motivation in JMC	Meetings not held regularly	Lack of interest of MO	Lacking in Monitoring System	Not relevant as ASHA – Sahyogini in action
1	Alwar	4	3	0	1	0	0	0	0
2	Bhilwara	7	5	1	4	2	0	1	1
3	Dungarpur	5	1	1	2	0	0	0	1
4	Jalore	7	0	0	1	0	0	1	1
5	Kota	6	3	0	3	0	2	1	1
6	Sri Ganganagar	7	3	1	4	1	0	0	1
7	S. Madhopur	7	3	0	1	0	0	1	0
	Total	43	18	3	16	3	2	4	5

5.2.13 Knowledge about ASHA Sahyogini

SN	District	MO Interviewed	ASHA Sahyogi	No of JMC selected as ASHA
1	Alwar	4	105	1
2	Bhilwara	7	156	9
3	Dungarpur	5	103	1
4	Jalore	7	66	13
5	Kota	6	115	4
6	Sri Ganganagar	7	223	12
7	S. Madhopur	7	132	4
	Total	43	900	44

Out of total MO respondents 65% found JMC scheme fruitful and relevant even after introduction of ASHA–Sahyogini scheme whereas 20% found it mere duplication. As per their opinion there is no relevance of the scheme.

5.2.14 Relevance of scheme after introducing the ASHA –Sahyogini Scheme

S N	Name of the District	Total Number of MO Interviewed	Yes	No	N/R
-----	----------------------	--------------------------------	-----	----	-----



SIHFW: an ISO: 9001:2008 certified institution
Concurrent Evaluation of Janmangal Programme in Rajasthan

1	Alwar	4	3	0	1
2	Bhilwara	7	5	1	1
3	Dungarpur	5	4	0	1
4	Jalore	7	3	4	0
5	Kota	6	4	1	1
6	Sri Ganganagar	7	3	2	2
7	S. Madhopur	7	6	1	0
	Total	43	28	9	6



Findings – District Janmangal Coordinator

As per the proposal all the JMC Coordinator were planned to be interviewed under this evaluation. JMC coordinators of the 7 sample district were directly interviewed and rest were contacted through postal process of interviewed. The questioner was send to the JMC coordinators and Deputy CM&HO, FW with request to send it back with their comments and responses. Out of total only 21 districts were replied. Analysis of this part is being done based on 21 filled questioners of the JMC coordinators of the districts? Deputy CHO FW has not given any separate remarks

1. Status of JMC Coordinators

Sn	Total Number of District Covered under scheme	Number of coordinators
1	Number of district covered in the sample	32
2	Number of Coordinators interviewed	7
3	Number of interviews conducted through post	14
4	Not send the filled formats	11

7.1 Education and experience of coordinators

Out of total 21 interviewed JMC coordinators 10 were graduates and 10 were post graduate rest one has not indicated his qualification. Most of the coordinators have experience more than 5 years some are joined service last year only. Coordinators are working with devotion and commitment but they are very less paid. Multiple responsibilities have been assigned to the JMC coordinator.

2 Education qualifications of JMC Coordinators

Number of JMC Coordinators interviewed	Education Status		
	Graduate	Post Graduate	Other
21	10	10	1

3. Working experience as of JMC Coordinators in the district

7.2 Traini ng of JMC and Coordinator.	Number of respondents	Less than one year	1-2 Yrs	2-3 Years	3-5 Years	5-8 Years	More than 8 Yrs
	21	2	5	2	2	4	6

As per the findings received from JMC coordinator, out of total 26639 JMCs 1964 are still untrained in 21 districts. JMC coordinators were oriented in the year 2004-5. Re-orientation of coordinators is also required.

4. Total Number of JMC in the district as per response of JMC Coordinators

Number of respondents	Total Number of JMCs	Number of trained JMC	Un trained JMC
21	26639	24675	1964

7.3. Supervision and monitoring



SIHFV: an ISO: 9001:2008 certified institution
Concurrent Evaluation of Janmangal Programme in Rajasthan

Supervision and monitoring of the programme is assigned to only JMC coordinator which is very impractical because one person cannot move on in entire district to supervise the programme. Block system is to be established. PHC MOs have least interest to monitor or supervise this programme. Supervisory targets are need to be assigned to the officer like MO, LHV, BPM etc. Presently 10 to 15 meetings are being attended by JMC coordinator in the district but to attend the meeting not the solution. Field visit in villages is also to be conducted.

5. Monitoring of Millan Meetings

Number of respondents	Number of meetings monitored	Meeting attended	
	Up to 8	10-12	15 and more
21	4	5	12

7.4 . Implementation issue

As per the report of JMC coordinators one couple is serving 7 to 15 couples. There is a need to increase the honorarium of JMCs. Irregular payment is the key problem as indicated by respondents. Lack of interest in MOs is another biggest problem.

As per JMC coordinators ASHA- Sahyogini has great importance in the community but they have not been able to replace the JMC. ASHA sahyoginis are report to DWCD they are concerned with women only Male partner among couple is only served by JMC male partner. No doubt Female counter part of JMC couple found more active in the field but male are also providing services. In 21 districts 227 JMCs have been selected as ASHA Sahyogini that is indication of good work of JMCs

6. Average No of Couples served by JMC as per JMC Coordinator

Number of respondents	Average No of Couple served		
	5-10	10-15	More 15
21	7	5	9

6 Status of Honorarium being received by JMCs as per MO

Number of respondents	By monthly in each meeting	Not regular in each meeting	Once in a year	Not fixed as soon as budget passed from treasury
21	12	4	1	4

7. Problems in implementation of Scheme

Number of respondents	List of problems						
	Irregular Payment of Hon.	Supply of material irregular	Lack of Motivation in JMC	Meetings not held regularly	Lack of interest of MO	Lacking in Monitoring System	Not relevant as ASHA – Sahyogini in action
21	8	0	2	4	7	3	3

8. Number of JMCs selected as ASHA –Sahyogini

Number of respondents	Number of JMCs selected as ASHA –Sahyogini
21	227

9 Relevance of scheme after introducing the ASHA –Sahyogini Scheme



SIHFW: an ISO: 9001:2008 certified institution
Concurrent Evaluation of Janmangal Programme in Rajasthan

Number of respondents	Yes	No
21	20	1



Chapter -8

General Observation and recommendations

In comparison to the inputs provided to the scheme results are very appreciable. JMC are very popular in the villages. More than 90 % users have good rapport with JMC and regularly receiving the contraceptives.

Other than distribution of non clinical contraceptives JMCs are providing counselling services to the eligible couples to use the IUD or sterilization method. Number Motivated people opting sterilization is very high and credit goes to the JMC. JMCs are also contributing in immunization, total sanitation campaign, promotion of DOTS and Depot holder of malaria.

ANMs and MO are participating in the meetings but both have least concern about the scheme. Very less no MOs accepted that they have undertaken the supervisory visit specifically for the scheme. ANMs are also unaware about the record maintained by JMC. Reporting is directly sent to the PHC. Sub Centres do not have the record about progress. They have record of only JMC couples.

In many districts, record of JMCs at district was found very old. The Names of JMC indicated in the list provided to us were not found as practicing JMCs in the field. They have been replaced by new couples long back. So regular updating of data is key issue.

ASHA sahyogini are very less concerned about distribution of non clinical contraceptives. They are mostly responsible to MCHN days and reporting to DWCD. JSY is another area of their commitment. But to serve the eligible couple by distributing contraceptives is none of there business. Most of the couples are receiving contraceptives only from JMCs or ANM or AWW

Some the JMC couples have been selected as ASHA sahyogini but this number is not very large. Only 3-5% cases were recorded.

Irregular payment during the meeting to JMCs found general problem in almost all the district. Many JMC were drop out or absent in the meeting because they did not get money on time. In some of the areas, this payment is being made quarterly or six monthly. An advance fund to each PHC may be given to ensure the regular payment in the meetings. Directions from DMHS may be issued to districts and MO PHCs for using the funds in payment of JMCs honorarium from untied grant of NRHM, in case delay in payment from treasury.

District JMC Coordinators are mostly active but less qualified and less paid. They are given multiple responsibilities in the districts.

Regular feedback system from state via any publication like News letter would be fruitful to express the problems of JMCs. It will encouraged them and motivate to better work. Award scheme to JMCs may be initiated for motivation.

Bimonthly meeting is not a good and sufficient system to monitor the work of JMCs a meeting at sub centre level should also be introduced. BPMs to be appointed under NRHM should make responsible to look after this scheme at block level.

Some places report at their level in registers was not maintained but report was regularly send to PHCs. This aspect is also need to be recorded.

Remuneration of JMCs and District coordinators need to be increased. Decision of increment of honorarium is to be taken by DMHS looking ito the vailable resources but in present context of NRHM HR policy, JMC Coordinator may be paid an amount of Rs 8000.00 per month. As per the requirement fresh recruitment may be done for better candidates. To give identity to the JMCs Identity Cards, Name Plates may be issued.



SIHFW: an ISO: 9001:2008 certified institution
Concurrent Evaluation of Janmangal Programme in Rajasthan

Remuneration of Janmangal couples may be raised from 200 to 750 so that wages lose and local travel may be compensated.

Training of JMC couples need to be strengthening. ASHA-Sahyogini are being trained for 23 days duration. A week long training of JMC must be ensured along with practical exposure in FP camps.

About 46.13 % couple out of total couples interviewed were found more then 35 years of the age which is higher than the guidelines. The JMCs who have crossed the age limit (35) need to be replaced. There were 312 Couples out of 1047 total JMC crossed the age of 35. 171 were more then 40 found during the survey who were crossed the age limit. Main hurdle found in the work of senior JMC is the communication with eligibly couples of young age. Age gap creates the communication gap to express the willingness to use the contraception.

UNFPA, Rajasthan has contributed to promote JMC scheme since its beginning. Training of District Janmangal coordinators were introduced and supported by UNFPA under IPD first time in the year 2004. In the year 2005 UNFPA has suggested a programme structure for the JMC which can be adopted with certain amendments if required. (Structure is enclosed)

Comparative analysis of progress as given in Annexure- 2 and three shows that contribution of JMC in service in take is quite appreciable. Detailed is shown in table –7 A

Progress of FP up to December 2007

Over all progress				Janmangal contribution			
OP Users	CC Users	Sterilization	IUD	Oral Pills	Nirodh	Sterilizati on	Copper –T
1002062	1155796	187609	183457	500209	578721	5980	9081
% of contribution of JMCs				49.91%	50.07	3.18	4.9%



Proposed Structure of Janmangal Programme (As suggested by UNFPA)

Looking into the constraints and weakness of the programme and present management structure of the programme, there is a need to redesign and restructured it. Looking into the importance of the programme, role of different functionaries involved with this programme and monitoring and supervision system following structure is suggested to strengthening the programme and to achieve the results of the programme.

State Janmangal Project Management Cell

Since the Janmangal Programme is being implemented in entire state and all the district are covered under this scheme so a support unit to manage, monitor, supervise, the activities like- selection of JMCs, Training and orientation of JMCs, bimonthly millan meetings, supplies and distribution of contraceptives, involvement of JMCs in other programmes, follow up the users, issues of counseling there is need to set up a well equipped State Level Janmangal Programme Management Unit.

SJPMU will work under the overall guidance and support of Director FW but Addl Director FW will be responsible for the functioning of SJPMU. One State Janmangal Coordinator, Two Assistant Janmangal Coordinator, one for look after the training and IEC activities and another is to look after the monitoring, supervision and supply etc. To support data analysis there will be one Statistical Assistant and one data entry operator will be placed. Details of the programme structure is as follows

Director-FW

Being a nodal person of the FW programme the over all in charge of the JMC programme and responsibility of the implementation of the programme activities will be of the Director FW.

Addl Director FW

Addl Director FW is the key person of the programme implementation so without involving the Addl Director FW the success of the programme cannot be ensured. As addl Director has the sole responsibility of other FW programme like immunization, RCH, EC and FP Programme so he will also be responsible for JMC Programme.

State Janmangal Coordinator

Looking into the wide coverage area and number of people's involvement in the programme there is a need to have an independent programme coordinator at state level. He will be responsible for:

- Ensuring timely correspondence with districts and issue the necessary guidelines for programme implementation.
- To look after the quality training of JMCs ,
- To ensure the involvement of MOs in Bimonthly meetings and to create interest and made meetings fruitful.
- Ensure the timely supply of the contraceptives as per demand of district.
- To develop mechanism for assessing the programme performance in terms of increase in CPR
- To ensure timely payments of honorarium of JMC at the meetings so that they could maintain their interest in the programme and participate regularly in the meetings
- Ensure the proper use of IEC material at field level through JMCs

Over all monitoring and supervision of the programme will also be done at the level of State Janmangal Coordinator. He will clarify the doubts, misconceptions about the use of contraceptives and other aspects of the programme.



Assistant Janmangal Coordinators

For the Assistance of State Janmangal Coordinator there should be a provision of two Assistant Janmangal Coordinators. One for looking after the trainings /and IEC or communication activities and another one is for looking after the supervision monitoring of the service delivery, supply and analysis of data.

Assistant Janmangal Coordinators (IEC/Trainings)

Under JMC programme all the JMCs are to be trained. In each year number of JMCs is expected to be dropout and new JMCs are to be recruited. So training of JMC is a continuous process. Dependence on MO-PHC for the training of JMC is not an appropriate decision for ensuring the quality of the training. For ensuring the time bound, systematic, subject specific, target oriented, client centered need based training of JMCs there is need to develop a specific training design based on the need assessment. District level training team is need to be formed and oriented regarding the topics and subjects of the programme and training methodology.

IEC and Communication regarding different topics, issues, programme and interventions are essential parts of the programme. Continuous awareness activities are to be conducted with the JMC to ensure the programme implementation.

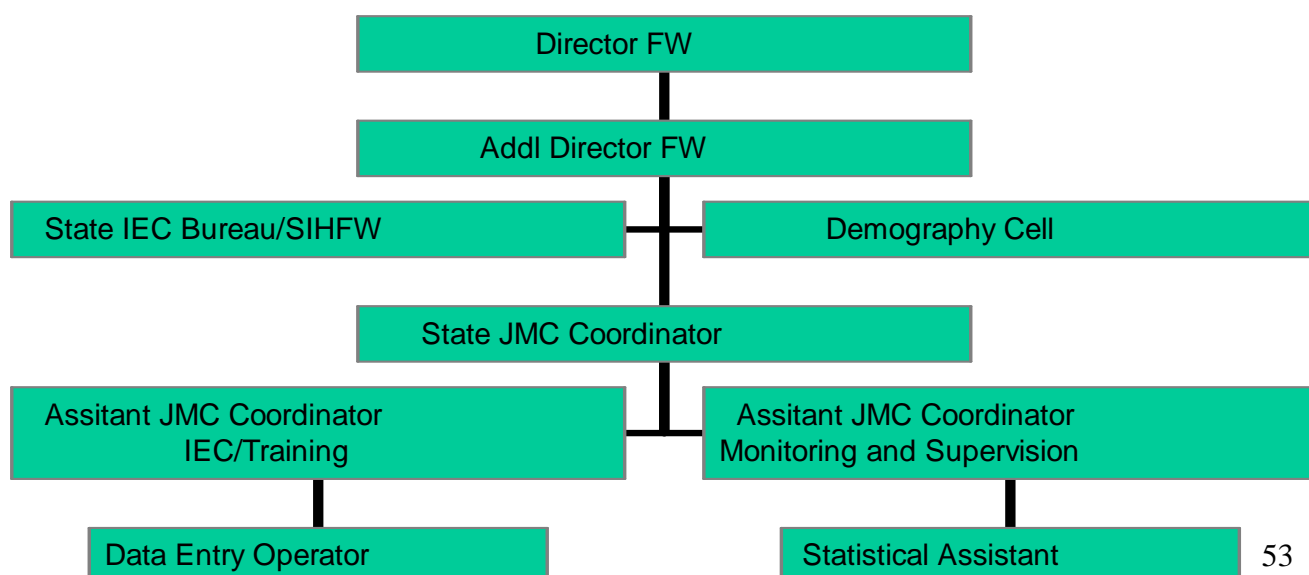
To ensure all the activities in professional mode a there should be position of Assistant Janmangal Coordinator to look after the IEC and training activities regarding the programme.

Assistant Janmangal Coordinators (Monitoring and Supervision)

To ensure the effective coverage of the programme there is need to strengthening the monitoring and evaluation of the programme. The present system of supervision of monitoring has no impact to ensure the quality of the programme because one person cannot spare the time to see the whole programme activities. Under proposed State Janmangal cell one position of Assistant programme Coordinator to look after the supervision, monitoring, supply and other related activities is proposed.

District and Block Monitoring

For district present District Janmangal Coordinators are less paid, less motivated and burdened with multiple responsibilities. A district level cell is required to be established under the Coordination of deputy CM&HO, FW. This cell should be equipped with separate computer and online. Each sub centre is required to have progress report of JMCs. JMCs can interact more easily with ANM and LHV. A system of interactive meetings of JMCs at Sub centre level should be initiated.





SIHFW: an ISO: 9001:2008 certified institution
Concurrent Evaluation of Janmangal Programme in Rajasthan

Annexure -2

Over all Progress report FP services in Rajasthan (Up December 2007)

Overall progress							
SN	District	OP Users	CC Users	Sterilization			IUD
				M	F	T	
1	Ajmer	17702	20370	275	6814	7089	6345
2	Alwar	12105	19311	444	11999	12443	5234
3	Banswada	20408	20139	25	5264	5289	16938
4	Baran	8325	14109	134	4446	4580	4391
5	Barmer	14554	16002	20	3901	3921	9215
6	Bharatpur	15042	19615	26	6786	6812	5820
7	Bhilwara	16982	17664	146	5014	5160	15325
8	Bikaner	15103	19575	36	4221	4257	6650
9	Bundi	13580	13015	47	3467	3514	5238
10	Chittorgarh	17716	18834	101	7067	7168	10972
11	Churu	30175	35070	348	4659	5007	6959
12	Dausa	10471	14483	12	5342	5354	4139
13	Dholpur	6010	9556	98	3760	3858	4746
14	Dungarpur	11360	11552	10	3460	3470	7580
15	Sriganganagar	24632	36964	234	8003	8237	12804
16	Hanumangarh	19558	21173	155	5351	5506	11957
17	Jaipur	32574	57726	483	19950	20433	6668
18	Jaisalmer	5734	7253	28	1420	1448	3375
19	Jalore	15758	17083	13	5670	5683	10896
20	Jhalwar	10245	17783	36	3488	3524	6851
21	Jhunjhunu	19561	22334	194	5964	6158	11926
22	Jodhpur	20219	21233	62	8290	8352	13069
23	Karauli	22072	25626	102	4953	5055	7429
24	Kota	11948	14503	486	3944	4430	4976
25	Nagaur	10772	11238	136	7856	7992	9728
26	Pali	19848	18152	59	6192	6251	15130
27	Rajasamand	12105	14221	55	2266	2321	6187
28	S. Madhopur	19059	17293	69	3852	3921	8308
29	Sikar	13971	16561	130	8790	8920	6406
30	Sirohi	21201	18734	44	2255	2299	11985
31	Tonk	18271	202218	29	3730	3759	6269
32	Udaipur	21897	21612	115	5283	5398	12509
		528958	629002	4152	183457	187609	276025



SIHFW: an ISO: 9001:2008 certified institution
Concurrent Evaluation of Janmangal Programme in Rajasthan

Annexure -3

Janmanal Programme 2007-08 (Progress up to December 2007)

SN	District	Total Number of PHCs	Janmanagl Couples	Millan Baithaks	Contraceptives Beneficiaries		Number Motivation of	
					Oral Pills	Nirodh	Steriliza tion	Copper - T
1	Ajmer	50	1150	98	17707	18194	43	40
2	Alwar	85	1851	218	6977	15676	132	52
3	Banswada	58	1467	274	24425	25001	206	246
4	Baran	36	1053	245	6052	8070	205	165
5	Barmer	66	1816	162	32737	35515	28	395
6	Bharatpur	58	1487	244	16036	16723	352	1560
7	Bhilwara	73	1745	271	14673	15596	223	1162
8	Bikaner	48	949	196	22259	22187	111	200
9	Bundi	29	915	150	8818	9389	14	235
10	Chittorgarh	65	1830	177	20713	29941	92	190
11	Churu	63	999	152	14942	17725	288	272
12	Dausa	32	1058	135	13182	21572	213	935
13	Dholpur	25	821	107	55223	9251	189	239
14	Dungarpur	43	1039	181	38957	37918	244	458
15	Sriganganagar	45	1480	214	17255	28619	573	370
16	Hanumangarh	43	833	132	13020	35617	152	51
17	Jaipur	97	2300	357	27764	37797	975	378
18	Jaisalmer	16	468	64	2436	4464	0	46
19	Jalore	56	1151	262	13518	13948	65	234
20	Jhalwar	35	1178	90	4425	13730	29	148
21	Jhunjhunu	76	1111	334	24682	29783	432	330
22	Jodhpur	79	1287	276	8829	10547	104	106
23	Karauli	27	900	133	5236	9265	156	149
24	Kota	32	836	137	4703	5505	176	129
25	Nagaur	94	1700	383	29179	35129	173	175
26	Pali	72	1065	271	8693	6781	54	66
27	Rajasamand	40	818	185	1189	1434	21	49
28	S. Madhopur	27	744	122	6788	10142	362	122
29	Sikar	74	1211	295	10846	12619	139	63
30	Sirohi	26	530	104	13180	13687	60	128
31	Tonk	47	917	147	12486	23590	130	143
32	Udaipur	91	2356	310	3279	3306	323	245
		1708	39065	6674	500209	578721	5980	9081



SIHFW: an ISO: 9001:2008 certified institution
Concurrent Evaluation of Janmangal Programme in Rajasthan

List of Master trainers for Janmangal Training Programme conducted by SIHFW

S. N.	District	Name & Designation	Place of Posting
1	Alwar	Mr. Leela Ram Yadav, PHN	ANM Trg. Center, Alwar
		Dr. C.P.Wadhwa, Distt. RCHO	Alwar
		Dr. Indu Gupta, Dy.CM&HO(FW)	Alwar
		Mr. Keshar Singh Meena, S.A.	O/o RCHO Alwar
		Mr. Lakhiram Prajapati, JMC	O/o RCHO Alwar
2	Banswara	Mr. Gopal Pandya, JMC	Addl. CM&HO(FW), Banswara
		Mr. Bharat Yagnik, S.A.	Dy.CM&HO(FW), Banswara
		Mr. Kodar Lal Bunkar, Vice President	Sarvodaya Sansthan, Kali Kalyan Dham, Banswara
		Mr. Suresh Pandya, Secretary	Deen Bandu Chetna Samiti, Nagarwara, Banswara
3	Bharatpur	Dr. Hrendra Singh, Dy.CM&HO	Bayana, Bharatpur
		Dr. Ramesh Chandra Upman, Dy.CM&HO	Deeg, Bharatpur
		Mr. Ombeer Singh, S.A.	O/o Addl. CM&HO, Bharatpur
		Mr. Satish Agarwal, JMC	O/o DRCHO, Bharatpur
		Ms. Aleyamma V.T.Nursing Tutor	DTC Kumher, Bharatpur
		Ms. Jayanti Deshwal	Disha Foundation, Bharatpur
		Mr. Somesh Kumar, NGO	ERDS, Bharatpur
4	Bhilwara	Dr. C.S. Sharma, Addl. CM&HO	Bhilwara
		Mr. Rajendra S.Purohit, Nsg. Supdt.	DTC, Bhilwara
		Ms. Komal Soni, IPD Co-ordinator	Prayas Seva Sansthan, Shahpura, Bhilwara
		Mr. Satish Sen, IPD Supervisor	NGO Asha Kiran Seva Sansthan, Gangapur, Bhilwara
		Mr. Vinay Kumar Parashar, JMC	O/o DRCHO Bhilwara
5	Bundi	Dr. Nirmal Kumar Soni, S.A.	O/o Addl. CM&HO(FW) Bundi
		Dr. Rajeev Saxena, Secretary	Richmond's-Kala Shikshan Society, Bundi
		Mr. Avdesh Bihari Sharma, N.S.	DTC Taleda, Bundi
		Mr. Shripal Goyal President	Bharat Vikas Parishad, Bundi
		Dr. Dinesh Sringi, M.O.	PHC, Bansi, Bundi
6	Chittorgarh	Mr. Narayan Singh Hada, JMC	O/o Addl. CM&HO, Bundi
		Mr. Rasila Thakur, NSg. Supdt.	DTC, Chittorgarh
		Mr. Jitendra Ojha, Coordinator	Anubhuti, Chittorgarh
		Mr. Panna Lal Mehta, S.A.	O/o DRCHO, Chittorgarh
		Mr. Vinod Kumar Ganna, Computer	O/o Addl. CM&HO(FW) Chittorgarh
		Mr. Pankaj Kumar Kalra, JMC	O/o Addl. CM&HO(FW) Chittorgarh
		Mr. Govind Ram Rabari,	Prayas, Chittorgarh
		Dr. Praveen Aswal, Addl. CM&HO	Chittorgarh
		Mr. Ram Sahay	O/o Addl. CM&HO, Dholpur
		Mr. Sanjeev Singh Chauhan	NGO Talasi Shiksha Samiti, Dholpur
7	Dholpur	Mr. Brijendra Gupta, NSg. Tutor	ANM Trg. Center, Dholpur
		Ms. Mamta, Social Worker	Prayatna Sanstha, Dholpur
		Dr. A.A. Khanjada	Addl. CM&HO(FW) Dholpur
		Mr. Bhawan Sahay Sharma, Nursing Tutor	DTC, Dungarpur
		Mr. Kushwant Deve, JMC	O/o Addl. CM&HO Office Dungarpur
8	Dungarpur	Mr. Tushar Pandya, NGO Member	Kalyan Samiti, Dungarpur
		Mr. Ranveer Singh Ratnu, PHN	HFWTC, Jaipur
		Mr. Ganpat Lal Chaudhary, JMC	Dy. CM&HO, Jaipur
9	Jaipur	Mr. Mhori Lal Gujar, Dy. EPO	O/o Dy. CM&HO (FW), Jaipur
		Mr. Ravindar Kumar, Dhonkariya, PHNI	HFWTC, Jaipur
		Mr. Gopal Lal Sharma, Nursing Tutor	ANM Training Centre, Karauli
		Mr. Mahesh Kumar Gaur, JMC	O/o Dy. CM&HO(FW) Karauli
10	Karauli	Mr. Raj Kumar Sharma, Dr. Ayurved	Ecat. Bodh Gram, Karauli
		Mr. Gulshan Kumar Sachdeva, S.A.	O/o Dy. CM&HO (FW) Kota
		Mr. Satya Narayan Sharma, JMC	O/o Dy. CM&HO(FW) Kota
11	Kota	Mr. Surya Prakash Meena, President	Nehru Yuwak Mandal, Bhamori, Kota
		Ms. Pratibha Trivedi, Secretary	Vinayak Vidhya Prasar Samiti, Rajsamand
		Ms. Fariyad Bano, Coordinator	Magra Mewar Vikash Sansthan, Jawaja, Rajsamand
12	Rajsamand	Ms. Sapana Paliwal, Coordinator	Rachana Sansthan, Saloda, Khamnor, Rajsamand
		Mr. Dhiraj Tiwari, NGO	CR&HR (NGO), Rajsamand
		Mr. Dinesh Chandra Srimali, S.A.	O/o Dy. CM&HO (FW) Rajsamand
		Mr. Shyam Lal Nai, JMC	O/o Dy. CM&HO (FW) Rajsamand
		Dr. M.L. Deora, Dy.CM&HO(FW)	Rajsamand
		Mr. Elsamma, M.K. LHV	UPHC, Gangapurcity, S.Madhapur
13	S.Madhapur	Dr. R.L. Meena, Addl. CM&HO (FW)	Swaimadhapur
		Mr. Harkesh Meena, S.A.	O/o Addl. CM&HO (FW) S.Madhapur
		Mr. Hanuman Prasad Jain, JMC	IPD, S.Madhapur
		Mr. Chandan Singh, NGO	Kachhawa Gramin Vikas Choth Ka Barwara, S.Madhapur
		Mr. Radha Krishan Swarnkar, PHN	ANM Training Centre, Tonk
		Dr. T.C. Agarwal, S.M.O.	CHC, Piplu, Tonk



SIHFW: an ISO: 9001:2008 certified institution
Concurrent Evaluation of Janmangal Programme in Rajasthan

14	Tonk	Mr. Surendar Kumar Jain, S.A.	O/o DRCHO, Tonk
		Mr. Ashok Kumar, JMC	O/o Addl. CM&HO (FW), Tonk
		Mr. Liladhar Trivedi, S.I.	CHC, Salumber, Udaipur
		Mr. Anil Joshi, Nursing Tutor	DTC, Salumber, Udaipur
15	Udaipur	Mr. Ashish Bhatnagar, Secretary	Manav Rojgar Kshmta Vikas Sansthan, Udaipur
		Dr. B.L. Mishra, Addl. CM&HO	Udaipur
		Ms. Lalita Kothari	O/o RCH Office, Udaipur
		Mr. Mahavir Singh Chundawat, Computer	CHC, Kurabad, Udaipur
		Dr. D.C. Punsal, Dy. CM&HO (FW)	Sirohi
		Mr. Ashok Kumar, JMC Coordinator	O/o Dy. CM&HO, Sirohi
16	Sirohi	Mr. Dhermandar Kumar, Computer	O/o Dy. CM&HO, Sirohi
		Ms. Annie N.J., Nursing Suptd.	DTC, Sirohi
		Ms. A. Richa, Secretary	Jan Chetna Sansthan, Abu Road
		Dr. Prashant Khatri, Addl. CM&HO (FW)	Churu
		Ms. Laxmi Amma R., NT	DTC, Churu
17	Churu	Mr. Sajjan Singh, JMC	O/o Addl. CM&HO (FW) Churu
		Mr. Om Prakash Bairwa, S.A.	O/o Addl. CM&HO (FW) Churu
		Mr. Uday Shanker Prasad Singh, PO	Navyuvak Mandal, Mithi Reduw ali, Churu
		Mr. Bhanwar Lal Ruyal, President	Nav Uvak Mandal, Khasoli, Churu
		Mr. D.K. Varshney, S.A.	O/o Addl. CM&HO (FW) Nagaur
		Mr. Mohan Singh, JMC	O/o Addl. CM&HO (FW) Nagaur
18	Nagaur	Mr. Rajendra Prasad Joshi, NS, Gr.II 1/C	ANMTC, Nagaur
		Mr. Pahalad Ram Bishnoi, NGO	I.T.A.K.R., Nagaur
		Dr. M.P. Singh, Dy. CM&HO (FW)	Bikaner
		Mr. S.K. Shrimali, S.A.	O/o Dy. CM&HO (FW) Bikaner
19	Bikaner	Ms. Saroj Swami, ANM/Computer	O/o Dy. CM&HO (FW) Bikaner
		Mr. Dinesh Pandya, JMC	O/o Dy. CM&HO (FW) Bikaner
		Mr. Mohanlal Jat, PHN	DTC, Nokha, Bikaner
		Dr. Vidya Sagar, Dy. CM&HO (FW)	Jhunjhunu
		Ms. Babita Kaswan, JMC	O/o Dy. CM&HO (FW), Jhunjhunu
		Mr. Jaswant Singh Yadav, S.A.	O/o Dy. CM&HO (FW), Jhunjhunu
20	Jhunjhunu	Mr. Ramakant Pareek, PHN	ANMTC, Jhunjhunu
		Ms. Majneet, NGO	Scope, Pilani, Jhunjhunu
		Dr. Mukesh Mehta, MO	O/o Addl. CM&HO (FW), Sriganganagar
		Mr. Jitendra Kumar Goswami, JMC	O/o Addl. CM&HO (FW), Sriganganagar
		Mr. Kirshan Kumar Goswami, NGO	Bal Shikshan and Mahila Uthan Samiti, S. Ganganagar
21	Sriganganagar	Mr. Kirshan Kumar Sharma, S.A.	O/o RCHO, Sriganganagar
		Dr. S.K. Agrawal, Addl. CM&HO	Hanumangarh
		Mr. Shobha Ram Karwasara, JMC	O/o Addl. CM&HO (FW) Hanumangarh
		Ms. Gian Kaur, LHV	CHC, Sangaria, Hanumangarh
22	Hanumangarh	Mr. Subhash Chandra Benial, Secy.	Gramin Vikas Seva Sansthan, Hanumangarh
		Dr. V.K. Purohit, Addl. CM&HO	Jodhpur
		Mr. Sumer Singh Gahlot, JMC	O/o Addl. CM&HO (FW) Jodhpur
		Mr. Sanjay Jain, S.A.	O/o Addl. CM&HO (FW) Jodhpur
23	Jodhpur	Mr. Indu Kumar Avasthi, Mantri	Manav Kalyan Sansthan, Jodhpur
		Mr. Kamlesh Bansal, Project Officer	O/o CM&HO (FW), Barmer
		Bhuvnesh kumar Gupta, Comp.	O/o Addl. CM&HO (FW), Barmer
		Mr. Teja Ram, JMC	O/o Addl. CM&HO (FW) Barmer
24	Barmer	Mr. Deva Ram, Secretary	RHEDI, Balotra, Barmer
		Mr. Har Bhagwan Rao, Chairman	NGO, Balotra, Barmer
		Mrs. Rekha Bagh, PHN	DTC, Beawar, Ajmer
		Mr. Rajendra Kumar, Computer	O/o Addl. CM&HO (FW) Ajmer
		Mr. Vijay Kumar Parashar, JMC	O/o Dy. CM&HO (FW), Ajmer
25	Ajmer	Ms. Munni Devi, NGO	Komal Bal and Mahila Kalyan Sansthan, Ajmer
		Dr. Suresh Yadav, Dy. CM&HO	Jaitaran, Pali
		Mr. Sampat Raj Tailor, Computer	O/o Addl. CM&HO (FW) Pali
		Mr. O.P. Gahlot, JMC	O/o Dy. CM&HO (FW), Pali
26	Pali	Mr. K.C. Saini, PHN	DTC, Pali
		Mr. Prantik Sarkar,	Care, Pali
		Mr. Bharat Sharma, President	Yash Sansthan, Bijova, Pali
		Dr. Prem Singh Lohiya,	Dy. CM&HO (FW) Baran
		Mr. Suresh Prakash Sharma, JMC	O/o Dy. CM&HO (FW), Baran
		Mr. Satya Prakash Sharma, Computer	O/o Dy. CM&HO (FW) Baran
27	Baran	Mr. Dharmendra Nirvikar, PO	Sai Baba Lok Kala Sansthan, Baran
		Dr. T.R. Meena, RCHO	Jhalawar
		Mr. Praveen Sharma, JMC	O/o Dy. CM&HO (FW) Jhalawar
		Mr. Fariduddin Shiekh, PHN	DTC, Jhalawar
28	Jhalawar	Mr. Kailash Biyani, S.A.	O/o RCHO, Jhalawar
		Mr. Manoj Vasu, JMC	O/o Dy. CM&HO (FW) Jaisalmer



SIHFV: an ISO: 9001:2008 certified institution
Concurrent Evaluation of Janmangal Programme in Rajasthan

		Mr. Ishak Khan, Health Coordinator	MMBA, AGOR, Jaisalmer
		Ms. Uma Devi, Health Worker	MMBA, AGOR, Jaisalmer
29	Jaisalmer	Dr. B.L. Bishnoi, SMO I/C	CHC, Siyana, Jalore
		Mr. Bhoma Ram, MPW against SA	O/o Addl. CM&HO(FW), Jalore
		Mr. Suresh Kumar, JMC	O/o Addl. CM&HO(FW), Jalore
30	Jalore	Mr. Roop Ram Yadav, PHN	ANMTC, Ahore, Jalore
		Mr. Mohan Lal Gehlot, Chairman	PRENA, NGO, Jalore

List of Districts and Blocks

	District	Block
1	ALWAR	RAMGARH
2		TIJARA
3		UMREN
4	JALORE	AAHORE
5		BHINMAAL
6		JALORE
7		SANCHOR
8	BHILWARA	AASHIND
9		HAMERGARH
10		KOTRI
11	KOTA	KAITHUN
12		RAMGANJMANDI
13		SAGOD
14	SHRI GANGANAGAR	PADAMPUR
15		SHRI GANGANAGAR
16		SURATGARH
17	SAWAI MADHOPUR	BOLI
18		KHANDAR
19		SAWAIMADHOPUR
20	DUNGARPUR	BACHEVADA
21		SAGWADA
22		SIMALWADA

List of PHCs

SN	District Name	PHC
1	ALWAR	BAMBOLI
2		EISHRIDA
3		MALAKHADA
4		OOTWAL
5		TIJARA
6		UMEREN
7	JALORE	AAHORE
8		BARGAV
9		BHINMAAL
10		DASPA
11		DHUMBDIYA
12		GAANG
13		GUDABALOTAN
14		JAKHADI
15		KAGMALA
16		KARRA
17		MANDOLI
18		PUNASA
19		RANIWARA
20		SAKAR
21		SEVRI
22		TAVAV
23	BHILWARA	AASHIND
24		BRAHMAN KI SARERI
25		GURLA
26		KOTRI



SIHFW: an ISO: 9001:2008 certified institution
Concurrent Evaluation of Janmangal Programme in Rajasthan

27		MANGROP
28		PAROLI
29		SHAMBHUGARH
30		SUVANA
31		SWAROOP GANJ
32	KOTA	AAWA
33		BYAWARKALA
34		CHECHAT
35		JULMI
36		KHEDARASULPUR
37		MANASGAON
38		MANDANA
39		MODAK STATION
40		SAGOD
41		SATALKHEDI
42	SHRI GANGANAGAR	HINDUMAL KOTE
43		KHEYALIWALA
44		MAJHUVAS
45		PADAMPUR
46		RAJPURA
47		RAJYASAR
48		SHIVPUR
49		SURATGARH
50	SAWAI MADHOPUR	BAHARAWANDA KHURD
51		BHADOTI
52		BHAGWATGAD
53		FALOUDI
54		KHANDAR
55		KHERNI
56		MALARNA CHOUD
57		MALARNA DUNGAR
58		SURWAL
59	DUNGARPUR	BHELUDA
60		CHANDOLI
61		CHARVADA
62		CHEKHELE
6+3		DAVAL
64		DHEMBOLA
65		GAUJI
66		PEETH
67		PUNERVAS
68		SAVALE
69		TAMTIYA



SIHFW: an ISO: 9001:2008 certified institution
Concurrent Evaluation of Janmangal Programme in Rajasthan



SIHFW: an ISO: 9001:2008 certified institution
Concurrent Evaluation of Janmangal Programme in Rajasthan

List of Village Covered under Evaluation

SN	District	Village
1	ALWAR	ACHALPURI
2	ALWAR	AGYARA
3	ALWAR	ARANDIKE
4	ALWAR	ASLEMPUR
5	ALWAR	BADI POKHAR
6	ALWAR	BAGAD MEV
7	ALWAR	BAGAD RAJPUT
8	ALWAR	BAGOR
9	ALWAR	BAHALA
10	ALWAR	BALATA
11	ALWAR	BALEYAVASH
12	ALWAR	BAMBOLI
13	ALWAR	BAMNI KHERA
14	ALWAR	BANDADA
15	ALWAR	BANDODE
16	ALWAR	BEDAR
17	ALWAR	BELANA
18	ALWAR	BELOLEYA
19	ALWAR	BHADKAUL
20	ALWAR	BHAJEET
21	ALWAR	BHATESRA
22	ALWAR	BHOVASH
23	ALWAR	BICHPURI
24	ALWAR	BOREYA KE KHEDI
25	ALWAR	BURJA
26	ALWAR	CHAK MEENA PURA
27	ALWAR	CHIPRADA
28	ALWAR	CHORTI
29	ALWAR	CHORTI PAHAR
30	ALWAR	DADAR
31	ALWAR	DAKPURI
32	ALWAR	DAMDAMA
33	ALWAR	DEHARWADA BAS
34	ALWAR	DESULA
35	ALWAR	DHADHOLI
36	ALWAR	DHALAVASH
37	ALWAR	DHARMPURA
38	ALWAR	DHOLPLASH
39	ALWAR	GOLETA
40	ALWAR	GUDPUR
41	ALWAR	HANGVAHADA
42	ALWAR	HASRNPUR MAFI
43	ALWAR	IEMTEPURA
44	ALWAR	INDOK
45	ALWAR	ISREDHA
46	ALWAR	JALALPUR
47	ALWAR	JATOLI
48	ALWAR	JHAREDA
49	ALWAR	JOJAKA
50	ALWAR	KAKRALI MEV
51	ALWAR	KALIPHADI
52	ALWAR	KALSADA



SIHFW: an ISO: 9001:2008 certified institution
Concurrent Evaluation of Janmangal Programme in Rajasthan

SN	District	Village
53	ALWAR	KAMADA
54	ALWAR	KAMALPUR
55	ALWAR	KANKRALI
56	ALWAR	KARIRIYA
57	ALWAR	KEMALA
58	ALWAR	KESHERPUR
59	ALWAR	KESROLI
60	ALWAR	KHANPUR JAT
61	ALWAR	KHELELPURI
62	ALWAR	KHERADA
63	ALWAR	KHERLI SYED
64	ALWAR	KHUTETA KALAN
65	ALWAR	KHUTETA KHURD
66	ALWAR	KLAGAVA
67	ALWAR	KULTAJPUR
68	ALWAR	KUSALGARH
69	ALWAR	LAVARI
70	ALWAR	LELI
71	ALWAR	LUSHDARA
72	ALWAR	MACHEDE
73	ALWAR	MADANPURI
74	ALWAR	MADHOGARH
75	ALWAR	MAHARAJAPURA
76	ALWAR	MAHRAJPUR
77	ALWAR	MAHUVAKHURD
78	ALWAR	MAJRAMAHNIYA
79	ALWAR	MAKACHPURI
80	ALWAR	MALEIRJAT
81	ALWAR	MANDOK GUJUKI
82	ALWAR	MANGLESHPUR
83	ALWAR	MARIYAWAS
84	ALWAR	MILKPURI
85	ALWAR	MOHBATPUR
86	ALWAR	MOJDIKA
87	ALWAR	MUNDANA
88	ALWAR	MUNPUR
89	ALWAR	MURADBASH
90	ALWAR	NAGALBANJIRKA
91	ALWAR	NAGALTAPPA
92	ALWAR	NAGLEGHAMABAT
93	ALWAR	NAGLI MEDHA
94	ALWAR	NASHAPUR
95	ALWAR	NAVEN NEGER
96	ALWAR	NEMELE
97	ALWAR	NORANGVAD
98	ALWAR	OOTWAL
99	ALWAR	PALA
100	ALWAR	PALASALI
102	ALWAR	PALPUR KE DHANI
103	ALWAR	PATPUR
104	ALWAR	PIPLENA
105	ALWAR	PRITHVIPURA
106	ALWAR	PUNKHER
107	ALWAR	RADHOKI



SIHFW: an ISO: 9001:2008 certified institution
Concurrent Evaluation of Janmangal Programme in Rajasthan

SN	District	Village
108	ALWAR	RAIKHEDA
109	ALWAR	RAMATNAGAR
110	ALWAR	RAMBASH
111	ALWAR	RATNGARHPALA
112	ALWAR	RATVAKA
113	ALWAR	SADOOLI
114	ALWAR	SAHODI
115	ALWAR	SALAHARDA
116	ALWAR	SALPURI
117	ALWAR	SANKLA
118	ALWAR	SELARPUR
119	ALWAR	SERITA
120	ALWAR	SHAVADA
121	ALWAR	SHEKPURE
122	ALWAR	SOTAKVASS
123	ALWAR	SUMAL
124	ALWAR	TAJLAKA
125	ALWAR	TEHLI
126	ALWAR	UMEREN
127	ALWAR	VIRAMPUR

Jalore

SN	District	Village
128	JALORE	AADARWARA
129	JALORE	AAHORE
130	JALORE	AALDI
131	JALORE	AGVARI
132	JALORE	AJODAR
133	JALORE	BADANWARI
134	JALORE	BANNO KI DHANI
135	JALORE	BARGAV
136	JALORE	BHAALNI
137	JALORE	BHAGLI
138	JALORE	BHAISWARA
139	JALORE	BHAODI
140	JALORE	BHIMPUR
141	JALORE	BICHAWARI
142	JALORE	BILLAR
143	JALORE	BITHURA
144	JALORE	CHANDPUR
145	JALORE	CHARA
146	JALORE	CHARLI
147	JALORE	CHIMANGARH
148	JALORE	DAHIPUR
149	JALORE	DANTIVAS
150	JALORE	DANTWARA
151	JALORE	DASPA
152	JALORE	DAYALPURA
153	JALORE	DESU
154	JALORE	DHAMSIN
155	JALORE	DHUMBDIYA
156	JALORE	DUDIYA
157	JALORE	DUNGARVA
158	JALORE	GANG



SIHFW: an ISO: 9001:2008 certified institution
Concurrent Evaluation of Janmangal Programme in Rajasthan

SN	District	Village
159	JALORE	GODAN
160	JALORE	GUDA BALOTAN
161	JALORE	HARSHWARA
162	JALORE	HEERPURA
163	JALORE	JAIRAN
164	JALORE	JAITPURA
165	JALORE	JAKHADI
167	JALORE	JALERA KLA
168	JALORE	JODWADA
169	JALORE	JOGAVA
170	JALORE	JORRA
171	JALORE	JUJARNI
172	JALORE	KAGMALA
173	JALORE	KAMBA
174	JALORE	KANIWARA
175	JALORE	KARRA
176	JALORE	KARWARA KI DHARNI
177	JALORE	KAVTARA
178	JALORE	KHANPUR
179	JALORE	KHARA
180	JALORE	KHERA
182	JALORE	KORA
183	JALORE	KOTDA
184	JALORE	KURRA
185	JALORE	KUSHLAPURA
186	JALORE	LARU
187	JALORE	LETA
188	JALORE	MADHOPURA
189	JALORE	MEETHRI
190	JALORE	NABAPURA
191	JALORE	NARSANA
192	JALORE	NARTA
193	JALORE	NASOOLI
194	JALORE	NIMBAHERA
195	JALORE	NIMBAWAS
196	JALORE	NOHRA
197	JALORE	ONN
198	JALORE	PALASIYA KLA
199	JALORE	PALU
200	JALORE	PAUNDGARA
201	JALORE	PAVTA
202	JALORE	PHAGOTRA
203	JALORE	PITHA PURA
204	JALORE	PUNASA
205	JALORE	RAJYASAR
206	JALORE	RANCHOR NAGAR
207	JALORE	RANIWARA KHURD
208	JALORE	RASIYAVAS
209	JALORE	RATANPURA
210	JALORE	ROOPAWATI KHURD
211	JALORE	RUCHIYAR
212	JALORE	RUPAWATI KALAN
213	JALORE	SADERIYA KUMBHAVAT
214	JALORE	SADRIYA BALOTAN



SIHF: an ISO: 9001:2008 certified institution
Concurrent Evaluation of Janmangal Programme in Rajasthan

SN	District	Village
215	JALORE	SAKAR
216	JALORE	SAKRHA
217	JALORE	SAMUJA
218	JALORE	SANKARNA
219	JALORE	SAPNI
220	JALORE	SARPATIYA
221	JALORE	SARTHALA
222	JALORE	SATRU
223	JALORE	SEVRI
224	JALORE	SHEPSI
225	JALORE	SINGAWAS
226	JALORE	SUKALIYA
227	JALORE	TAVAV
228	JALORE	THOBU
229	JALORE	VAAMANWADA
230	JALORE	VAGOTARA
231	JALORE	VARDAR
232	JALORE	WAQTAPURA

Bhilwara

SN	District	Village
233	BHILWARA	AAKADSADA
234	BHILWARA	AAMESAR
235	BHILWARA	ABHAKHADI
236	BHILWARA	AJITPURA
237	BHILWARA	AMARPURA
238	BHILWARA	AOUJAGER
239	BHILWARA	ARJEYA
240	BHILWARA	ATUAN
241	BHILWARA	BADA MAHUA
242	BHILWARA	BADALE
243	BHILWARA	BALAPURA
244	BHILWARA	BAN KA KHEDA
245	BHILWARA	BARSANYA
246	BHILWARA	BASHADA
247	BHILWARA	BATHEDA
248	BHILWARA	BEDAMUHA
249	BHILWARA	BEJUNDA
250	BHILWARA	BHADLE KHADA
251	BHILWARA	BHAGGA KA KHERA
252	BHILWARA	BHAGWANPURA
253	BHILWARA	BHERUKHEDA
254	BHILWARA	BHOLI
255	BHILWARA	BSHAKUNDL
256	BHILWARA	CHA PREL
257	BHILWARA	CHA PRI
258	BHILWARA	CHITAR SINGH KA KHEDA
259	BHILWARA	CHITTORIYA
260	BHILWARA	CHOPRA KHEDA
261	BHILWARA	DADEYA
262	BHILWARA	DAND KA KHERA
263	BHILWARA	DANDAL
264	BHILWARA	DANTRA BANDH
265	BHILWARA	DATTA JATTHI



SIHFV: an ISO: 9001:2008 certified institution
Concurrent Evaluation of Janmangal Programme in Rajasthan

SN	District	Village
266	BHILWARA	DAULA TPURA
267	BHILWARA	DEVKHEDA
268	BHILWARA	DEVLI
269	BHILWARA	DEVRIYA
270	BHILWARA	DHALKAKHADA
271	BHILWARA	DHANAI RI
272	BHILWARA	DHGA KA KHADA
273	BHILWARA	DHOKLIYA
274	BHILWARA	DHOLEKHADA
275	BHILWARA	DULHAPURA
276	BHILWARA	DUREVA
277	BHILWARA	EAKLINGPURA
278	BHILWARA	ETAWA
279	BHILWARA	GADARMALA
280	BHILWARA	GADERMALA
281	BHILWARA	GADRI KHEDA
282	BHILWARA	GAYLO KA KHEDA
283	BHILWARA	GEHULI
284	BHILWARA	GHADWAI
285	BHILWARA	GHUMDASS
286	BHILWARA	GOKULPURA
287	BHILWARA	GOLWADI
288	BHILWARA	GORANDIYA
289	BHILWARA	GOVIND SINGH KA KHERA
290	BHILWARA	GUHADI
291	BHILWARA	GUNDLE
292	BHILWARA	HARMADA
293	BHILWARA	HASIYAS
294	BHILWARA	HAZI WAS
295	BHILWARA	HELAD
296	BHILWARA	HUR KHEDANIYA
297	BHILWARA	JASWANTPURA
298	BHILWARA	JEEPIYA
299	BHILWARA	JHADOL
300	BHILWARA	JHAMROKA BADIYA
301	BHILWARA	KAKROLIYA MAFI
302	BHILWARA	KALAYANPURA
303	BHILWARA	KALSAS
304	BHILWARA	KALUNDIPA
305	BHILWARA	KANTI
306	BHILWARA	KAOTAKI
307	BHILWARA	KAROH I
308	BHILWARA	KATAR
309	BHILWARA	KERTPURA
310	BHILWARA	KERUNA
311	BHILWARA	KESARPURA
312	BHILWARA	KHERABAD
313	BHILWARA	KOCHERYA
314	BHILWARA	KODIYA
315	BHILWARA	KODUKOTA
316	BHILWARA	KOLIKHEDA
317	BHILWARA	LAKHMANYAWAS
318	BHILWARA	LASADIYA
319	BHILWARA	MAGNI KHEDA



SIHFW: an ISO: 9001:2008 certified institution
Concurrent Evaluation of Janmangal Programme in Rajasthan

SN	District	Village
320	BHILWARA	MALI KHEDA
321	BHILWARA	MALOLA
322	BHILWARA	MALUMPURA
323	BHILWARA	MANSHA
324	BHILWARA	MANSINGH JI KA KHEDA
325	BHILWARA	MATA JI KHEDA
326	BHILWARA	MEENA KA KHEDA
327	BHILWARA	MEFLIYAS
328	BHILWARA	MOD KA NIMBEDA
329	BHILWARA	MUJRESH
330	BHILWARA	NAYA TALAB
331	BHILWARA	NEGDIYA
332	BHILWARA	NOGAVA
333	BHILWARA	PAATLIYAS
334	BHILWARA	PALADE
335	BHILWARA	PANSAL
336	BHILWARA	PARASOLI
337	BHILWARA	PAROTIPARA
338	BHILWARA	PASHAL
339	BHILWARA	PELEYAKALA
340	BHILWARA	PHOOLDEH KA BADIYA
341	BHILWARA	PIPLI
342	BHILWARA	POUNDRASS
343	BHILWARA	PURANI PARSOLI
344	BHILWARA	RAGHUNATHPURA
345	BHILWARA	RAJOLA
346	BHILWARA	RAJPURA
347	BHILWARA	RAMPURIYA
348	BHILWARA	RECHADA
349	BHILWARA	REETH
350	BHILWARA	REGARO KI JHOPRI
351	BHILWARA	ROOPURA
352	BHILWARA	RUPHELI
353	BHILWARA	SABALPURA
354	BHILWARA	SALAMPURA
355	BHILWARA	SAMALEYA
356	BHILWARA	SAMODI
357	BHILWARA	SANGAVA
358	BHILWARA	SANGNI
359	BHILWARA	SARAI KA KHEDA
360	BHILWARA	SATOLA KA KHEDA
361	BHILWARA	SAUPURA
362	BHILWARA	SHRINAGAR
363	BHILWARA	SIDRIYAS
364	BHILWARA	SIGH JI KA KHEDA
365	BHILWARA	SODIYAS
366	BHILWARA	SOMSIYA
367	BHILWARA	TALIKHEDA
368	BHILWARA	TASVARIYA
369	BHILWARA	THUMIYA
370	BHILWARA	TILOLI
371	BHILWARA	UDAILIYAWAS

Dungarpur



SIHFV: an ISO: 9001:2008 certified institution
Concurrent Evaluation of Janmangal Programme in Rajasthan

	District Name	Village
372	DUNGARPUR	AKHEPUR
373	DUNGARPUR	AMADE
374	DUNGARPUR	AMARPURA
375	DUNGARPUR	AMBADA
376	DUNGARPUR	ANNAPURA
377	DUNGARPUR	BABADI
378	DUNGARPUR	BACHEDAYA
379	DUNGARPUR	BADAVA
380	DUNGARPUR	BADGAMA
381	DUNGARPUR	BAGARI
382	DUNGARPUR	BAISYA RAMKSHR
383	DUNGARPUR	BAJAPURA
384	DUNGARPUR	BAKADA
385	DUNGARPUR	BALADAET
386	DUNGARPUR	BALPAN
387	DUNGARPUR	BANDALA
388	DUNGARPUR	BARDA
389	DUNGARPUR	BASEYA
390	DUNGARPUR	BHADAU
391	DUNGARPUR	BHANDARA
392	DUNGARPUR	BHANDARI
393	DUNGARPUR	BHAVANPURA
394	DUNGARPUR	BHEL UDE
395	DUNGARPUR	BHUVADAFELA
396	DUNGARPUR	BOKHLA
397	DUNGARPUR	BOLONAYA
398	DUNGARPUR	BORI
399	DUNGARPUR	BORMATA
400	DUNGARPUR	BUMALA
401	DUNGARPUR	CHAMAHUDI
402	DUNGARPUR	DARVAR KE GATI
403	DUNGARPUR	DEMEYA
404	DUNGARPUR	DHANI UPLI
405	DUNGARPUR	DHANIKALA
406	DUNGARPUR	DHOVADA GHATI
407	DUNGARPUR	DHUNDE
408	DUNGARPUR	DOLA
409	DUNGARPUR	DOLI
410	DUNGARPUR	DUDARA TARALPADA
411	DUNGARPUR	DUKA
412	DUNGARPUR	DUVALEYA
413	DUNGARPUR	GADA PATTA PEETH
414	DUNGARPUR	GADALAL
415	DUNGARPUR	GADET
416	DUNGARPUR	GADVADASHABAR
417	DUNGARPUR	GAJI
418	DUNGARPUR	GAJI GATA
419	DUNGARPUR	GANDAVA
420	DUNGARPUR	GANDAVA-2
421	DUNGARPUR	GONDHI GATA
422	DUNGARPUR	GORADA
423	DUNGARPUR	GOVADI
424	DUNGARPUR	GUABAD
425	DUNGARPUR	GULABPURA



SIHFV: an ISO: 9001:2008 certified institution
Concurrent Evaluation of Janmangal Programme in Rajasthan

	District Name	Village
426	DUNGARPUR	GUMANPURA
427	DUNGARPUR	INDRAKHETA
428	DUNGARPUR	JADHANA
429	DUNGARPUR	JAORAVARSINGH
430	DUNGARPUR	JATHANA
431	DUNGARPUR	JHERNI
432	DUNGARPUR	KADVAL
433	DUNGARPUR	KAGUDAVA
434	DUNGARPUR	KAILASHPURI
435	DUNGARPUR	KAKARADARA
436	DUNGARPUR	KALE KA PADALA
437	DUNGARPUR	KANPUR
438	DUNGARPUR	KESARPURA
439	DUNGARPUR	KHEIR KHEYA
440	DUNGARPUR	KUMVALA
441	DUNGARPUR	KUNDALA
442	DUNGARPUR	LADASOR
443	DUNGARPUR	LALPURA
444	DUNGARPUR	LAXMIANPURA
445	DUNGARPUR	LIMBOAD
446	DUNGARPUR	MAJOLA
447	DUNGARPUR	MALI
448	DUNGARPUR	MALVI
449	DUNGARPUR	MANDAVA BHARA
450	DUNGARPUR	MANDE FAJEI
451	DUNGARPUR	MAROAP
452	DUNGARPUR	MATAVALA
453	DUNGARPUR	MAVADA
454	DUNGARPUR	MAYATA
455	DUNGARPUR	MUHAD BHAGASAM
456	DUNGARPUR	MUNDAL
457	DUNGARPUR	NANDODA
458	DUNGARPUR	NAOKHNA
459	DUNGARPUR	NARVADA
460	DUNGARPUR	NAVAGAVA
461	DUNGARPUR	NAVASHARA
462	DUNGARPUR	NICHALI DHANI
463	DUNGARPUR	OAD
464	DUNGARPUR	PACHROAD
465	DUNGARPUR	PADALA
466	DUNGARPUR	PADALA MANAROT
467	DUNGARPUR	PADARAD
468	DUNGARPUR	PADVA
469	DUNGARPUR	PALANPURA
470	DUNGARPUR	PANDLAMORU
471	DUNGARPUR	POHARI PATALAN
472	DUNGARPUR	PUNERVAS
473	DUNGARPUR	RAJPUR
474	DUNGARPUR	RAMPUR
475	DUNGARPUR	RAMSURBADA
476	DUNGARPUR	RAMSURJUNA
477	DUNGARPUR	RANDHI
478	DUNGARPUR	RANDOLI
479	DUNGARPUR	RANIBELI



SIHFV: an ISO: 9001:2008 certified institution
Concurrent Evaluation of Janmangal Programme in Rajasthan

	District Name	Village
480	DUNGARPUR	RANTHOUR
481	DUNGARPUR	RATADA
482	DUNGARPUR	SALAMPURA
483	DUNGARPUR	SALOTA
484	DUNGARPUR	SARTHUNA
485	DUNGARPUR	SASLAI
486	DUNGARPUR	SATE
487	DUNGARPUR	SAVALE
488	DUNGARPUR	SENLIYA PANDYA
489	DUNGARPUR	SHIVAPUI
490	DUNGARPUR	SUKHADER
491	DUNGARPUR	SULAMPURA
492	DUNGARPUR	SUNDERPUR
493	DUNGARPUR	SURO KA TALAV
494	DUNGARPUR	SURPUR
495	DUNGARPUR	TEETH
496	DUNGARPUR	THAKERDA
497	DUNGARPUR	THAM KA TALAB
498	DUNGARPUR	TODE OABARI
499	DUNGARPUR	TORINYA
500	DUNGARPUR	UATAYA
501	DUNGARPUR	UPLAPADA
502	DUNGARPUR	VAGBOL
503	DUNGARPUR	VAKESH NEGAR
504	DUNGARPUR	VEN
505	DUNGARPUR	VERBADA
506	DUNGARPUR	VIJAYBADA

Sawai Madhopur

	District Name	Village
507	SAWAI MADHOPUR	ADALVADA KHURD
508	SAWAI MADHOPUR	ADUNKHURD
509	SAWAI MADHOPUR	AJNOTI
510	SAWAI MADHOPUR	ALLAPUR
511	SAWAI MADHOPUR	ANIYALA
512	SAWAI MADHOPUR	BADGAON
513	SAWAI MADHOPUR	BADBAS
514	SAWAI MADHOPUR	BADDONAYACHA
515	SAWAI MADHOPUR	BADOUD
516	SAWAI MADHOPUR	BADPUR
517	SAWAI MADHOPUR	BADSHAHAPURA
518	SAWAI MADHOPUR	BAGEENA
519	SAWAI MADHOPUR	BAHDOTI
520	SAWAI MADHOPUR	BALAPURA
521	SAWAI MADHOPUR	BANDHA
522	SAWAI MADHOPUR	BANOUTA
523	SAWAI MADHOPUR	BEIDPURA
524	SAWAI MADHOPUR	BHADOTI
525	SAWAI MADHOPUR	BHAGWATGAD
526	SAWAI MADHOPUR	BHARAWANDA KHURD
527	SAWAI MADHOPUR	BHARJA GADI
528	SAWAI MADHOPUR	BHAWPUR
529	SAWAI MADHOPUR	BHTED
530	SAWAI MADHOPUR	BHUKHA



SIHFW: an ISO: 9001:2008 certified institution
Concurrent Evaluation of Janmangal Programme in Rajasthan

	District Name	Village
531	SAWAI MADHOPUR	BICHUDOUNA
532	SAWAI MADHOPUR	BILOLINADI
533	SAWAI MADHOPUR	BOHANA
534	SAWAI MADHOPUR	BRHEDA
535	SAWAI MADHOPUR	BRIYARA
536	SAWAI MADHOPUR	CHANDOLI
537	SAWAI MADHOPUR	CHHAN
538	SAWAI MADHOPUR	CHYARDA KHURD
539	SAWAI MADHOPUR	DABBI BANAS
540	SAWAI MADHOPUR	DAMUNKHURD
541	SAWAI MADHOPUR	DEHALODA
542	SAWAI MADHOPUR	DHANOULI
543	SAWAI MADHOPUR	DHARMPURI
544	SAWAI MADHOPUR	DIDWARI
545	SAWAI MADHOPUR	DOBADA KHURD
546	SAWAI MADHOPUR	DONDHARI
547	SAWAI MADHOPUR	DOULATPURA
548	SAWAI MADHOPUR	DOUNA ICHA
549	SAWAI MADHOPUR	DUBBI BANAS
550	SAWAI MADHOPUR	DUMODA
551	SAWAI MADHOPUR	FALOUDI
552	SAWAI MADHOPUR	GALAD
553	SAWAI MADHOPUR	GALD KALA
554	SAWAI MADHOPUR	GAMBHIRA
555	SAWAI MADHOPUR	GANDAWAR
556	SAWAI MADHOPUR	GOPALPURA
557	SAWAI MADHOPUR	GOTHADA
558	SAWAI MADHOPUR	GOUJARI
559	SAWAI MADHOPUR	HADUNDI
560	SAWAI MADHOPUR	HARIPUR
561	SAWAI MADHOPUR	HIMDWADA
562	SAWAI MADHOPUR	ITAWA
563	SAWAI MADHOPUR	JADAWATA
564	SAWAI MADHOPUR	JARAWATI
565	SAWAI MADHOPUR	JASTANA
566	SAWAI MADHOPUR	JATWADA KALA
567	SAWAI MADHOPUR	JAYSINGH PURA
568	SAWAI MADHOPUR	JEENAPUR
569	SAWAI MADHOPUR	JHADKUND
570	SAWAI MADHOPUR	JHOPADA
571	SAWAI MADHOPUR	JHOPADI
572	SAWAI MADHOPUR	JOLANDA
573	SAWAI MADHOPUR	JOULA
574	SAWAI MADHOPUR	KALAKUAA
575	SAWAI MADHOPUR	KAMOKHARI
576	SAWAI MADHOPUR	KAREL
577	SAWAI MADHOPUR	KARMODA
578	SAWAI MADHOPUR	KEERATPURA
579	SAWAI MADHOPUR	KHANDAR
580	SAWAI MADHOPUR	KHAT KHURD
581	SAWAI MADHOPUR	KHERLI KALA
582	SAWAI MADHOPUR	KHERNI
583	SAWAI MADHOPUR	KHIDARPUR JADOUN
584	SAWAI MADHOPUR	KHOHAREE



SIHFV: an ISO: 9001:2008 certified institution
Concurrent Evaluation of Janmangal Programme in Rajasthan

	District Name	Village
585	SAWAI MADHOPUR	KISHANPURA
586	SAWAI MADHOPUR	KOTHALI
587	SAWAI MADHOPUR	KOUSHALI
588	SAWAI MADHOPUR	KUNDALI NADI
589	SAWAI MADHOPUR	KYRDA KHURD
590	SAWAI MADHOPUR	LADOTA
591	SAWAI MADHOPUR	LOKHADA
592	SAWAI MADHOPUR	MADANPURA
593	SAWAI MADHOPUR	MAHU
594	SAWAI MADHOPUR	MAKSUDAN PURA
595	SAWAI MADHOPUR	MALARNA DUNGAR
596	SAWAI MADHOPUR	MALARNA STATION
597	SAWAI MADHOPUR	MANOLI
598	SAWAI MADHOPUR	MAYAPUR
599	SAWAI MADHOPUR	MENPURA
600	SAWAI MADHOPUR	MEY KALA
601	SAWAI MADHOPUR	MEY KHURD
602	SAWAI MADHOPUR	MUHOMMAD PUR
603	SAWAI MADHOPUR	MUKUNDPURA
604	SAWAI MADHOPUR	NAHARI KHURD
605	SAWAI MADHOPUR	NA Y PUR
606	SAWAI MADHOPUR	NEEMOD
607	SAWAI MADHOPUR	NIDRDA
608	SAWAI MADHOPUR	PACHIPALIYA
609	SAWAI MADHOPUR	PADDAWARDAR
610	SAWAI MADHOPUR	PADEIDEE TOPKHANA
611	SAWAI MADHOPUR	PALI
612	SAWAI MADHOPUR	PAWANDI
613	SAWAI MADHOPUR	PILENDI
614	SAWAI MADHOPUR	PURA
615	SAWAI MADHOPUR	RAGHUVANTI
616	SAWAI MADHOPUR	RAMADI
617	SAWAI MADHOPUR	RAMDI
618	SAWAI MADHOPUR	RA SUL PURA
619	SAWAI MADHOPUR	REPAT PURA
620	SAWAI MADHOPUR	SAGARWASA
621	SAWAI MADHOPUR	SA WALPUR
622	SAWAI MADHOPUR	SA WATA
623	SAWAI MADHOPUR	SEENOLI
624	SAWAI MADHOPUR	SENDHATI
625	SAWAI MADHOPUR	SHREE PURA
626	SAWAI MADHOPUR	SHYAMOUTA
627	SAWAI MADHOPUR	SIROHI
628	SAWAI MADHOPUR	SUKHAL
629	SAWAI MADHOPUR	SUNARI
630	SAWAI MADHOPUR	SUNDARPUR
631	SAWAI MADHOPUR	TALA WADA
632	SAWAI MADHOPUR	TARANPUR
633	SAWAI MADHOPUR	TEENDU
634	SAWAI MADHOPUR	TIBARA
635	SAWAI MADHOPUR	TOND
636	SAWAI MADHOPUR	VEIRNA
637	SAWAI MADHOPUR	VIJAY NAGAR



SIHFW: an ISO: 9001:2008 certified institution
Concurrent Evaluation of Janmangal Programme in Rajasthan

Kota

	DistrictName	Village
638	KOTA	AALANIYA
639	KOTA	AALEDI
640	KOTA	AAMLI
641	KOTA	AAWA
642	KOTA	ADUSA
643	KOTA	AMARPURA
644	KOTA	AMRITKHEDI
645	KOTA	AMRITKUA
647	KOTA	ARJUNPURA
648	KOTA	BABULIYA
649	KOTA	BADODIYA KALA
650	KOTA	BAWADI KHEDA
651	KOTA	BHAWPURA
652	KOTA	BHEEMPURA
653	KOTA	BHILOT
654	KOTA	BHOJPURA
655	KOTA	BHOLU
656	KOTA	BHULAHEDA
657	KOTA	BORDA
658	KOTA	BORINAKALA
659	KOTA	BORKUI
660	KOTA	BRIJESHPURA
661	KOTA	CHADINDA
662	KOTA	CHECHAT
663	KOTA	DELLIPURA
664	KOTA	DEVALIMAJHI
665	KOTA	DEVILIKHURD
667	KOTA	DHABADEH
668	KOTA	DHANI
669	KOTA	DHARUPURA
670	KOTA	DHAYPURA
671	KOTA	DIGASI
672	KOTA	DIGOD
673	KOTA	DOBADA
674	KOTA	DURJANPURA
675	KOTA	DUSLANA
676	KOTA	GADHWADA
677	KOTA	GANESHPURA
678	KOTA	GAONDI
679	KOTA	GEHUKHEDI
680	KOTA	GHAGHATANA
681	KOTA	GOPALPURA
682	KOTA	GUDALA
683	KOTA	GUJARIYAKHEDI
684	KOTA	HANOTIYA
685	KOTA	HIMLI
686	KOTA	JALIKHEDA
687	KOTA	JALIMPURA



SIHFV: an ISO: 9001:2008 certified institution
Concurrent Evaluation of Janmangal Programme in Rajasthan

	DistrictName	Village
688	KOTA	JHALIPURA
689	KOTA	JUGALPURA
690	KOTA	JULMI
691	KOTA	KAITHODI
692	KOTA	KALAJEDI
693	KOTA	KALYAKHEDI
694	KOTA	KALYAKUI
695	KOTA	KAMOLAR
696	KOTA	KARIRIYA
697	KOTA	KEWALNAGAR
698	KOTA	KHADIPAR
699	KOTA	KHAJURI
700	KOTA	KHEDALI
701	KOTA	KISHANPURA
702	KOTA	KOLA
703	KOTA	KOLANA
704	KOTA	KORADI
705	KOTA	KOTADI
706	KOTA	KOTHALA PADAMPURA
707	KOTA	KUDAIT
708	KOTA	KUDAYALA
709	KOTA	KUMBHKOT
710	KOTA	KURAD
711	KOTA	KUWARPURA
712	KOTA	LAKHARIYA
713	KOTA	LASEDIYA
714	KOTA	LAXMIPURA
715	KOTA	MADANPURA
716	KOTA	MALIHEDA
717	KOTA	MANASGAON
718	KOTA	MANDALIYA
719	KOTA	MANDANA
720	KOTA	MAWASA
721	KOTA	MAYALA
722	KOTA	MODAK GAON
723	KOTA	MODAK STATION
724	KOTA	MORYA
725	KOTA	NAGALKHEDI
726	KOTA	NALODIYA
727	KOTA	NAYAPURA
728	KOTA	OPADIYA
729	KOTA	PAMAKHEDI
730	KOTA	PEEPAKHEDI
731	KOTA	PEESAHEDE
732	KOTA	PRAHLADPURA
733	KOTA	RAJGARH
734	KOTA	RAJPURA
735	KOTA	RAMKHEDALI
736	KOTA	RAMNAGAR
737	KOTA	RAMRAJPURA
738	KOTA	RAMTALA I
739	KOTA	RANPUR
740	KOTA	RASULPUT
741	KOTA	ROTEDE



SIHFW: an ISO: 9001:2008 certified institution
Concurrent Evaluation of Janmangal Programme in Rajasthan

	DistrictName	Village
742	KOTA	RUGNATHPURA
743	KOTA	SAHARVADA
744	KOTA	SALESHKHURD
745	KOTA	SANJAY NAGAR
746	KOTA	SARANKHEDI
747	KOTA	SATALKHEDI
748	KOTA	SATDHARA
749	KOTA	SAWANBHADO
750	KOTA	SELAMKHEDI
751	KOTA	SINGHPURA
752	KOTA	SOGARIYA
753	KOTA	SOHANPURA
754	KOTA	THATHED
755	KOTA	THUMDA
756	KOTA	URNA
758	KOTA	VINODKALA
759	KOTA	VINODKHURD
760	KOTA	VISHANYAKHEDI

Shri Ganganagar

	DistrictName	Village
761	SHRI GANGANAGAR	11LNP
762	SHRI GANGANAGAR	13 GD
763	SHRI GANGANAGAR	13LMP
764	SHRI GANGANAGAR	15EA
765	SHRI GANGANAGAR	18BB
766	SHRI GANGANAGAR	19BB
767	SHRI GANGANAGAR	1JJ
768	SHRI GANGANAGAR	1KSR
769	SHRI GANGANAGAR	21BB
770	SHRI GANGANAGAR	23BB
771	SHRI GANGANAGAR	24BB
772	SHRI GANGANAGAR	25BB
773	SHRI GANGANAGAR	27BB
774	SHRI GANGANAGAR	2D
775	SHRI GANGANAGAR	2ML
776	SHRI GANGANAGAR	2Y
777	SHRI GANGANAGAR	33BB
778	SHRI GANGANAGAR	34BB
779	SHRI GANGANAGAR	34LNP
780	SHRI GANGANAGAR	35BB
781	SHRI GANGANAGAR	36LNP
782	SHRI GANGANAGAR	39LNP
783	SHRI GANGANAGAR	3JJ
784	SHRI GANGANAGAR	3ML
785	SHRI GANGANAGAR	3Y
786	SHRI GANGANAGAR	43RB
787	SHRI GANGANAGAR	44RB
788	SHRI GANGANAGAR	47GGI
789	SHRI GANGANAGAR	4ML
790	SHRI GANGANAGAR	51LNP
791	SHRI GANGANAGAR	5BBA
792	SHRI GANGANAGAR	5MC
793	SHRI GANGANAGAR	6E CHOTI



SIHFV: an ISO: 9001:2008 certified institution
Concurrent Evaluation of Janmangal Programme in Rajasthan

	DistrictName	Village
794	SHRI GANGANAGAR	6EEA
795	SHRI GANGANAGAR	6LNP
796	SHRI GANGANAGAR	6NN
797	SHRI GANGANAGAR	7CCA
798	SHRI GANGANAGAR	7LMP
799	SHRI GANGANAGAR	84LNP
800	SHRI GANGANAGAR	8EEA
801	SHRI GANGANAGAR	8LNP
802	SHRI GANGANAGAR	8NNB
803	SHRI GANGANAGAR	8RB
804	SHRI GANGANAGAR	92.600ROR
805	SHRI GANGANAGAR	9LNP
806	SHRI GANGANAGAR	9RB
807	SHRI GANGANAGAR	9STD
808	SHRI GANGANAGAR	AMRAPURA JATAN
809	SHRI GANGANAGAR	AODAKEI
810	SHRI GANGANAGAR	BADHVAWALI
811	SHRI GANGANAGAR	BAGTAVALI
812	SHRI GANGANAGAR	BAGVANSAR
813	SHRI GANGANAGAR	BAJEGER
814	SHRI GANGANAGAR	BHAGVANSAR
815	SHRI GANGANAGAR	BHARUPURA
816	SHRI GANGANAGAR	BHIYAWALEE
817	SHRI GANGANAGAR	DALVA
818	SHRI GANGANAGAR	DULLA PUR CARRY
819	SHRI GANGANAGAR	GOPALSAR
820	SHRI GANGANAGAR	HARISINGHPURA
821	SHRI GANGANAGAR	HENDOORA
822	SHRI GANGANAGAR	JALOKI
823	SHRI GANGANAGAR	JANKEIDASH
824	SHRI GANGANAGAR	KALEYA
825	SHRI GANGANAGAR	KARANESAR
826	SHRI GANGANAGAR	KERDU
827	SHRI GANGANAGAR	KHATT LAVANA
828	SHRI GANGANAGAR	KHRVA
829	SHRI GANGANAGAR	KOTHA
830	SHRI GANGANAGAR	LALGARHIYA
831	SHRI GANGANAGAR	MAJHUVAS
832	SHRI GANGANAGAR	NARSINGHPURA
833	SHRI GANGANAGAR	NAYEVAREKA
834	SHRI GANGANAGAR	NETAWALA
835	SHRI GANGANAGAR	PADAMPUR
836	SHRI GANGANAGAR	PAKKI
837	SHRI GANGANAGAR	PEPARAN
838	SHRI GANGANAGAR	PEPASA-I
839	SHRI GANGANAGAR	RAJANA
840	SHRI GANGANAGAR	RAJPURA
841	SHRI GANGANAGAR	RAJYASAR
842	SHRI GANGANAGAR	RANGMAHAL
843	SHRI GANGANAGAR	SABU KE ROAD
844	SHRI GANGANAGAR	SANGETA
845	SHRI GANGANAGAR	SARDAR PRA LADANA
846	SHRI GANGANAGAR	SHIVPUR
847	SHRI GANGANAGAR	SUJAVALPUR



SIHFW: an ISO: 9001:2008 certified institution
Concurrent Evaluation of Janmangal Programme in Rajasthan

	DistrictName	Village
848	SHRI GANGANAGAR	UDAYPUR
849	SHRI GANGANAGAR	VARADVALA
850	SHRI GANGANAGAR	VAREKA
851	SHRI GANGANAGAR	VARMANA



SIHFV: an ISO: 9001:2008 certified institution
Concurrent Evaluation of Janmangal Programme in Rajasthan

List of Sub centre covered under the survey

SN	District	SubCenter
1	ALWAR	AKBARPUR
2	ALWAR	ASLEMPUR
3	ALWAR	BACETPUR
4	ALWAR	BAGAD MEV
5	ALWAR	BAGAD RAJPUT
6	ALWAR	BAGHOR
7	ALWAR	BAHALA
8	ALWAR	BALATA
9	ALWAR	BAMBOLI
10	ALWAR	BANDODE
11	ALWAR	BECHOLA
12	ALWAR	BEDAR
13	ALWAR	BHADKAUL
14	ALWAR	BHAJEET
15	ALWAR	BHAREDA
16	ALWAR	BHUGHOUR
17	ALWAR	BIGVADA
18	ALWAR	BURJA
19	ALWAR	CHORTI PAHAR
20	ALWAR	DESULA
21	ALWAR	EISHRIDA
22	ALWAR	GUDPUR
23	ALWAR	GUJUKI
24	ALWAR	HAMERAKA
25	ALWAR	HANGVADA
26	ALWAR	HASRNPUR MAFI
27	ALWAR	JATPUR
28	ALWAR	JHAREDA
29	ALWAR	KALIPHADI
30	ALWAR	KALSADA
31	ALWAR	KANKRALI
32	ALWAR	KESHERPUR
33	ALWAR	KESROLI
34	ALWAR	KHELELPURI
35	ALWAR	KHERLI SYED
36	ALWAR	KHUTETA KALAN
37	ALWAR	KUSALGARH
38	ALWAR	LUSHDARA
39	ALWAR	MADHOGARH
40	ALWAR	MAHAVKALA
41	ALWAR	MAHUVAKHURD
42	ALWAR	MOHBATPUR
43	ALWAR	NAGALBANJIRKA
44	ALWAR	OOTWAL
45	ALWAR	PALPURA
46	ALWAR	PRITHVIPURA
47	ALWAR	PUNKHER
48	ALWAR	RAIKHEDA
49	ALWAR	RATANGARH
50	ALWAR	ROPVASH
51	ALWAR	SADOOLI
52	ALWAR	SAHODI



SIHFW: an ISO: 9001:2008 certified institution
Concurrent Evaluation of Janmangal Programme in Rajasthan

SN	District	SubCenter
53	ALWAR	SARATA
54	ALWAR	SENDHLI
55	ALWAR	SHAVADA
56	ALWAR	SUMAL
57	ALWAR	UMEREN

Jalore

SN	Di strict	SubCenter
58	JALORE	AAHORE
59	JALORE	AALDI
60	JALORE	AGVARI
61	JALORE	AJODAR
62	JALORE	BADANWARI
63	JALORE	BADGAON
64	JALORE	BARGAV
65	JALORE	BHAALNI
66	JALORE	BHADOTI
67	JALORE	BHAISWARA
68	JALORE	BHIMPUR
69	JALORE	BICHAWARI
70	JALORE	BILLAR
71	JALORE	BITHURA
72	JALORE	CHANDPUR
73	JALORE	CHARA
74	JALORE	CHARLI
75	JALORE	DAHIPUR
76	JALORE	DANTIVAS
77	JALORE	DANTWARA
78	JALORE	DASPA
79	JALORE	DAYALPURA
80	JALORE	DESU
81	JALORE	DHAMSIN
82	JALORE	DHUMBDIYA
83	JALORE	DUNGARVA
84	JALORE	FAGOTARA
85	JALORE	GANG
86	JALORE	GODAN
87	JALORE	GUDA BALOTAN
88	JALORE	HARSHWARA
89	JALORE	HEERPURA
90	JALORE	JAIRAN
91	JALORE	JAKHADI
92	JALORE	JALERA KLA
93	JALORE	JODWADA
94	JALORE	JOGAVA
95	JALORE	JOGRNI
96	JALORE	JORRA
97	JALORE	JUJARNI
98	JALORE	KAGMALA
99	JALORE	KAMBA
100	JALORE	KANIWARA
101	JALORE	KARRA
102	JALORE	KARWARA



SIHFW: an ISO: 9001:2008 certified institution
Concurrent Evaluation of Janmangal Programme in Rajasthan

SN	District	SubCenter
103	JALORE	KAVTARA
104	JALORE	KHANPUR
105	JALORE	KHARA
106	JALORE	KHERA
107	JALORE	KORA
108	JALORE	KOTDA
109	JALORE	KURHA
110	JALORE	KUSHLAPURA
111	JALORE	LARU
112	JALORE	LETA
113	JALORE	MEETHRI
114	JALORE	NABAPURA
115	JALORE	NARSANA
116	JALORE	NARTA
117	JALORE	NASOOLI
118	JALORE	NAUSARA
119	JALORE	NIMBAHERA
120	JALORE	NIMBAWAS
121	JALORE	NOHRA
122	JALORE	ONN
123	JALORE	PAVTA
124	JALORE	PHAGOTRA
125	JALORE	PUNASA
126	JALORE	RANCHOR NAGAR
127	JALORE	RANIWARA KHURD
128	JALORE	ROOPAWATI KHURD
129	JALORE	RUCHIYAR
130	JALORE	SADRIYA BALOTAN
131	JALORE	SAKAR
132	JALORE	SAKRHA
133	JALORE	SAMUJA
134	JALORE	SANKARNA
135	JALORE	SARTHALA
136	JALORE	SATRU
137	JALORE	SEELASAN
138	JALORE	SEVRI
139	JALORE	SHEPSI
140	JALORE	SINGAWAS
141	JALORE	TAVAV
142	JALORE	THOBU
143	JALORE	VAAMANWARA
144	JALORE	VARDAR

Bhilwada

SN	District	SubCenter
145	BHILWARA	AAKADSADA
146	BHILWARA	AAMESAR
147	BHILWARA	ARJEYA
148	BHILWARA	ATUAN
149	BHILWARA	BADA MAHUA
150	BHILWARA	BAGARI
151	BHILWARA	BAJUNDA



SIHFV: an ISO: 9001:2008 certified institution
Concurrent Evaluation of Janmangal Programme in Rajasthan

SN	District	SubCenter
152	BHILWARA	BARSANI
153	BHILWARA	BARSANIYA
154	BHILWARA	BEDAMUHA
155	BHILWARA	BHADLE KHADA
156	BHILWARA	BHOLI
157	BHILWARA	BRAHMAN KI SARERI
158	BHILWARA	CHA PREL
159	BHILWARA	DADA WAT
160	BHILWARA	DANDAL
161	BHILWARA	DANTRA
162	BHILWARA	DARA WAT
163	BHILWARA	DAREHA
164	BHILWARA	DAVLI
165	BHILWARA	DEVLI
167	BHILWARA	DEVRIYA
168	BHILWARA	DHOKLIYA
169	BHILWARA	DUREVA
170	BHILWARA	GADARMALA
171	BHILWARA	GEHULI
172	BHILWARA	GHEVRIYA
173	BHILWARA	GUNDLE
174	BHILWARA	GURLA
175	BHILWARA	HELAD
176	BHILWARA	KALWAS
177	BHILWARA	KANDA
178	BHILWARA	KANTI
179	BHILWARA	KAROH
180	BHILWARA	KATAR
182	BHILWARA	KAWALARI
183	BHILWARA	KHERABAD
184	BHILWARA	KHERILYA
185	BHILWARA	KOCHERYA
186	BHILWARA	KODUKOTA
187	BHILWARA	KOIKOTA
188	BHILWARA	KOTAJ
189	BHILWARA	KOTRI
190	BHILWARA	LA SADIYA
191	BHILWARA	MALOLA
192	BHILWARA	MANDA PEYA
193	BHILWARA	MOD KA NIMBEDA
194	BHILWARA	NEGLIYA
195	BHILWARA	PALDI
196	BHILWARA	PANSAL
197	BHILWARA	PARASOLI
198	BHILWARA	PAROLI
199	BHILWARA	PASHAL
200	BHILWARA	PELEYAKALA
201	BHILWARA	PIPLI
202	BHILWARA	RAGHUNATH PURA
203	BHILWARA	RAMPURIA
204	BHILWARA	RECHADA
205	BHILWARA	REETH
206	BHILWARA	RICHDA
207	BHILWARA	RUPHELI



SIHFW: an ISO: 9001:2008 certified institution
Concurrent Evaluation of Janmangal Programme in Rajasthan

SN	District	SubCenter
208	BHILWARA	SANGAVA
209	BHILWARA	SATOLA KA KHEDA
210	BHILWARA	SAWAIPUR
211	BHILWARA	SIDRIYAS
212	BHILWARA	SINDRA
213	BHILWARA	SWAROOP GANJ
214	BHILWARA	UDAILYAWAS

Kota

SN	District	SubCenter
215	KOTA	AAMLI
216	KOTA	AAWA
217	KOTA	AMRITKUA
218	KOTA	BADODIYAKALA
219	KOTA	BHANWARIYAN
220	KOTA	BORNIKALA
221	KOTA	CHANDRESAL
222	KOTA	CHECHAT
223	KOTA	DELLIPURA
224	KOTA	DEVALI
225	KOTA	DHAYPURA
226	KOTA	DIGOD
227	KOTA	DUSLANA
228	KOTA	GADIYA
229	KOTA	GODALYAHEDI
230	KOTA	JULMI
231	KOTA	KALYAKHEDI
232	KOTA	KAMOLAR
223	KOTA	KEWALNAGAR
224	KOTA	KHADIYA
225	KOTA	KHAJURI
226	KOTA	KHEDALI
227	KOTA	KHEDARASULPUR
228	KOTA	KOLANA
229	KOTA	KUDAYALA
230	KOTA	KUMBHOT
231	KOTA	KUNDANPUR
232	KOTA	KURAD
233	KOTA	KURADIYAKHURD
234	KOTA	LAKHARIYA
235	KOTA	LAXMIPURA
236	KOTA	MADANPURA
237	KOTA	MANASGAON
238	KOTA	MANDALIYA
239	KOTA	MANDANA
240	KOTA	MANDAP
241	KOTA	MAWASA
242	KOTA	MODAK STATION
243	KOTA	NALODIYA
244	KOTA	PEEPAKHEDI
245	KOTA	RAJGARH
246	KOTA	RANPUR



SIHFW: an ISO: 9001:2008 certified institution
Concurrent Evaluation of Janmangal Programme in Rajasthan

SN	District	SubCenter
247	KOTA	SAHARVADA
248	KOTA	SALESHKHURD
249	KOTA	SATALKHEDI
250	KOTA	SAWANBHADO
251	KOTA	SOGARIYA
252	KOTA	TATHED
253	KOTA	VINODKHURD



SIHFW: an ISO: 9001:2008 certified institution
Concurrent Evaluation of Janmangal Programme in Rajasthan

SHRI GANGANAGAR

	District	SubCenter
254	SHRI GANGANAGAR	13 GD
255	SHRI GANGANAGAR	17BB
256	SHRI GANGANAGAR	19BB
257	SHRI GANGANAGAR	23BB
258	SHRI GANGANAGAR	2ML
259	SHRI GANGANAGAR	2Y
260	SHRI GANGANAGAR	33BB
261	SHRI GANGANAGAR	34BB
262	SHRI GANGANAGAR	36LNP
263	SHRI GANGANAGAR	3JJ
264	SHRI GANGANAGAR	3ML
265	SHRI GANGANAGAR	3PPM
266	SHRI GANGANAGAR	3Y
267	SHRI GANGANAGAR	43RB
268	SHRI GANGANAGAR	4ML
269	SHRI GANGANAGAR	51LNP
270	SHRI GANGANAGAR	6BBA
271	SHRI GANGANAGAR	6E CHOTI
272	SHRI GANGANAGAR	6EEA
273	SHRI GANGANAGAR	6LMP
274	SHRI GANGANAGAR	6LNP
275	SHRI GANGANAGAR	83LNP
276	SHRI GANGANAGAR	8NNA
277	SHRI GANGANAGAR	8RB
278	SHRI GANGANAGAR	9STD
279	SHRI GANGANAGAR	AKKAWALI
280	SHRI GANGANAGAR	AODAKEI
281	SHRI GANGANAGAR	BAGTAVALI
282	SHRI GANGANAGAR	BAGVANSAR
283	SHRI GANGANAGAR	BHAGVANSARL
284	SHRI GANGANAGAR	BHIYAWALEE
285	SHRI GANGANAGAR	DALVA
286	SHRI GANGANAGAR	DULLA PUR CARRY
287	SHRI GANGANAGAR	JALOKI
288	SHRI GANGANAGAR	JANKEDAVALA
289	SHRI GANGANAGAR	JANKEIDASH
290	SHRI GANGANAGAR	KALEYA
291	SHRI GANGANAGAR	KERDU
292	SHRI GANGANAGAR	KHATT LAVANA
293	SHRI GANGANAGAR	KHEYALIWA
294	SHRI GANGANAGAR	KHRVA
295	SHRI GANGANAGAR	KOTHA
296	SHRI GANGANAGAR	LALGARHIYA
297	SHRI GANGANAGAR	LALGHEDIYA
298	SHRI GANGANAGAR	MAJHUVAS
299	SHRI GANGANAGAR	MOKALSAR
300	SHRI GANGANAGAR	NARSINGHPURA
301	SHRI GANGANAGAR	NA YEVARAKA
302	SHRI GANGANAGAR	NETAWALAA
303	SHRI GANGANAGAR	PADAMPUR
304	SHRI GANGANAGAR	PAKKI
305	SHRI GANGANAGAR	RAJPURA



SIHFW: an ISO: 9001:2008 certified institution
Concurrent Evaluation of Janmangal Programme in Rajasthan

	District	SubCenter
306	SHRI GANGANAGAR	RAJYASAR
307	SHRI GANGANAGAR	RANGMAHAL
308	SHRI GANGANAGAR	SARDARPURA LADANA
309	SHRI GANGANAGAR	SEHEGA VALE
310	SHRI GANGANAGAR	SELVANE
311	SHRI GANGANAGAR	SHIVPUR
312	SHRI GANGANAGAR	SUJAVALPUR
313	SHRI GANGANAGAR	SURATGARH
314	SHRI GANGANAGAR	UDAYPUR
315	SHRI GANGANAGAR	UDYAPUR
316	SHRI GANGANAGAR	VARMANA



SIHFW: an ISO: 9001:2008 certified institution
Concurrent Evaluation of Janmangal Programme in Rajasthan

	District	SubCenter
317	SAWAI MADHOPUR	ADARSH NAGAR
318	SAWAI MADHOPUR	ADUNKHURD
319	SAWAI MADHOPUR	AJNOTI
320	SAWAI MADHOPUR	ALLAPUR
321	SAWAI MADHOPUR	ANYLA
322	SAWAI MADHOPUR	ATUNKALA
323	SAWAI MADHOPUR	BADBAS
324	SAWAI MADHOPUR	BADOUD
325	SAWAI MADHOPUR	BANOUTA
326	SAWAI MADHOPUR	BHADOTI
327	SAWAI MADHOPUR	BHAGWATGAD
328	SAWAI MADHOPUR	BHARAWANDA KHURD
329	SAWAI MADHOPUR	BHATED
330	SAWAI MADHOPUR	BHUKHA
331	SAWAI MADHOPUR	BICHUDONA
332	SAWAI MADHOPUR	CHANDOLI
333	SAWAI MADHOPUR	CHHAN
334	SAWAI MADHOPUR	DABBIBANAS
335	SAWAI MADHOPUR	DHAMUN
336	SAWAI MADHOPUR	DHANOULI
337	SAWAI MADHOPUR	DIMODA
338	SAWAI MADHOPUR	DOULATPURA
339	SAWAI MADHOPUR	DUBBI BANAS
340	SAWAI MADHOPUR	DUMODA
341	SAWAI MADHOPUR	DUNGARI
342	SAWAI MADHOPUR	FALOUDI
343	SAWAI MADHOPUR	GALAD KALA
344	SAWAI MADHOPUR	GAMBHIRA
345	SAWAI MADHOPUR	GANDAWAR
346	SAWAI MADHOPUR	GHUDASI
347	SAWAI MADHOPUR	GOTHADA
348	SAWAI MADHOPUR	HANDOLLI
349	SAWAI MADHOPUR	HINDUPURA
350	SAWAI MADHOPUR	JADAWATA
351	SAWAI MADHOPUR	JASTANA
352	SAWAI MADHOPUR	JATWADA KALA
353	SAWAI MADHOPUR	JEENA PUR
354	SAWAI MADHOPUR	JHOPDA
355	SAWAI MADHOPUR	JOLANDA
356	SAWAI MADHOPUR	JOULA
357	SAWAI MADHOPUR	KAREL
358	SAWAI MADHOPUR	KARMONDA
359	SAWAI MADHOPUR	KHANDAR
360	SAWAI MADHOPUR	KHANDELA
361	SAWAI MADHOPUR	KHERNI
362	SAWAI MADHOPUR	KUNARI
363	SAWAI MADHOPUR	KUNDALI NADI
364	SAWAI MADHOPUR	LOKHADA
365	SAWAI MADHOPUR	MAKSUDAN PURA
366	SAWAI MADHOPUR	MALARNA CHOUD
367	SAWAI MADHOPUR	MALARNA DUNGAR
368	SAWAI MADHOPUR	MALARNA STATION
369	SAWAI MADHOPUR	MANOLI



SIHFV: an ISO: 9001:2008 certified institution
Concurrent Evaluation of Janmangal Programme in Rajasthan

	District	SubCenter
370	SAWAI MADHOPUR	MENPUR
371	SAWAI MADHOPUR	MEY KALA
372	SAWAI MADHOPUR	MEY KHURD
373	SAWAI MADHOPUR	NAPPUR
374	SAWAI MADHOPUR	NAYPUR
375	SAWAI MADHOPUR	NEEMOD
376	SAWAI MADHOPUR	NIDARDA
377	SAWAI MADHOPUR	PALI
378	SAWAI MADHOPUR	RAGHUVANTI
379	SAWAI MADHOPUR	RAMADI
380	SAWAI MADHOPUR	SAWATA
381	SAWAI MADHOPUR	SEENOLI
382	SAWAI MADHOPUR	SHREE PURA
383	SAWAI MADHOPUR	SUKHAL
384	SAWAI MADHOPUR	SUNARI
385	SAWAI MADHOPUR	SYAMOTA
386	SAWAI MADHOPUR	TALAWADA
387	SAWAI MADHOPUR	TODAR
388	SAWAI MADHOPUR	VADOUDA

DUNGARPUR

	District Name	Sub Centre
389	DUNGARPUR	ADAVAR
390	DUNGARPUR	AKHEPUR
391	DUNGARPUR	AMBADA
392	DUNGARPUR	BABADI
393	DUNGARPUR	BADGAMA
394	DUNGARPUR	BAGARI
395	DUNGARPUR	BAISYA
396	DUNGARPUR	BAKADA
397	DUNGARPUR	BARDA
398	DUNGARPUR	BASEYA
399	DUNGARPUR	BATHER
400	DUNGARPUR	BENSEMER
401	DUNGARPUR	BHANA SEMAL
402	DUNGARPUR	BHANDARI
403	DUNGARPUR	BHUVADAFELA
404	DUNGARPUR	BOKHLA
405	DUNGARPUR	BORI
406	DUNGARPUR	BORMATA
407	DUNGARPUR	CHARVADA
408	DUNGARPUR	CHEKHELE
409	DUNGARPUR	DAVHAD
410	DUNGARPUR	DHEMBOLA
411	DUNGARPUR	DHOBHRA
412	DUNGARPUR	DHUBED
413	DUNGARPUR	DUDARA
414	DUNGARPUR	DUKA
415	DUNGARPUR	GADA PATTI PEETH
416	DUNGARPUR	GAJI
417	DUNGARPUR	GANDAVA
418	DUNGARPUR	GAVADA
419	DUNGARPUR	GOVADI



SIHFV: an ISO: 9001:2008 certified institution
Concurrent Evaluation of Janmangal Programme in Rajasthan

	District Name	Sub Centre
420	DUNGARPUR	GUA VAD
421	DUNGARPUR	GULABPURA
422	DUNGARPUR	GUMANPURA
423	DUNGARPUR	JADHANA
424	DUNGARPUR	JAORA VARSINGH
425	DUNGARPUR	JATHANA
426	DUNGARPUR	JHERNI
427	DUNGARPUR	JORA PURA
428	DUNGARPUR	KAHELA
429	DUNGARPUR	KAILASHPURIU
430	DUNGARPUR	KAKARADRA
431	DUNGARPUR	KUMVALA
432	DUNGARPUR	LADSHOR
433	DUNGARPUR	LAXMIANPURA
434	DUNGARPUR	LIMBOD
435	DUNGARPUR	MACHADAYA
436	DUNGARPUR	MAHUND
437	DUNGARPUR	MATAVALA
438	DUNGARPUR	MAVADA
439	DUNGARPUR	MUHAD
440	DUNGARPUR	NANDODA
441	DUNGARPUR	NAOKHNA
442	DUNGARPUR	NETHUYA
443	DUNGARPUR	NOGAMA
444	DUNGARPUR	PADLAMORU
445	DUNGARPUR	PADVA
446	DUNGARPUR	PANDLAMORU
447	DUNGARPUR	PEETH
448	DUNGARPUR	PHALATAR
449	DUNGARPUR	RAJPUR
450	DUNGARPUR	RAMPUR
451	DUNGARPUR	RAMSURBADA
452	DUNGARPUR	RAMSURJUNA
453	DUNGARPUR	RANDOLI
454	DUNGARPUR	RANTHOUR
455	DUNGARPUR	ROMADA
456	DUNGARPUR	SAKODARA
457	DUNGARPUR	SALOTA
458	DUNGARPUR	SARTHUNA
459	DUNGARPUR	SATERAMPUR
460	DUNGARPUR	SAVALE
461	DUNGARPUR	SEMLIYA
462	DUNGARPUR	SENLIYA PANDYA
463	DUNGARPUR	SUNDERPUR
464	DUNGARPUR	SURPUR
465	DUNGARPUR	TAKERI
466	DUNGARPUR	TAMTIYA
467	DUNGARPUR	TEETH
468	DUNGARPUR	THAKERDA
469	DUNGARPUR	TODE OABARI
470	DUNGARPUR	VAGBOL
471	DUNGARPUR	VIJAYBADA
472	DUNGARPUR	VIKESHNEGER



SIHFW: an ISO: 9001:2008 certified institution
Concurrent Evaluation of Janmangal Programme in Rajasthan

List of PHCs



01:2008 certified institution
al Programme in Rajasthan

SN	DistrictName	PHC
1	ALWAR	BAMBOLI
2		EISHRIDA
3		MALAKHADA
4		OOTWAL
5		TIJARA
6		UMEREN
7	JALORE	AAHORE
8		BARGAV
9		BHINMAAL
10		DASPA
11		DHUMBDIYA
12		GAANG
13		GUDABALOTAN
14		JAKHADI
15		KAGMALA
16		KARRA
17		MANDOLI
18		PUNASA
19		RANIWARA
20		SAKAR
21		SEVRI
22		TAVAV
23	BHILWARA	AA SHIND
24		BRAHMAN KI SARERI
25		GURLA
26		KOTRI
27		MANGROP
28		PAROLI
29		SHAMBHUGARH
30		SUVANA
31		SWAROOP GANJ
32	KOTA	AAWA
33		BYAWARKALA
34		CHECHAT
35		JULMI
36		KHEDARASULPUR
37		MANASGAON
38		MANDANA
39		MODAK STATION
40		SAGOD
41		SATALKHEDI
42	SHRI GANGANAGAR	HINDUMAL KOTE
43		KHEYALIWALA
44		MAJHUVAS
45		PADAMPUR
46		RAJPURA
47		RAJYASAR
48		SHIMPUR
49		SURATGARH
50	SAWAI MADHOPUR	BAHARAWANDA KHURD
51		BHADOTI
52		BHAGWATGAD
53		FALOUDI
54		KHANDAR
55		KHERNI
56		MALARNA CHOUD
57		MALARNA DUNGAR
58		SURWAL
59	DUNGARPUR	BHELUDA
60		CHANDOLI
61		CHARVADA
62		CHEKHELE
6+3		DAVAL
64		DHEMBOLA
65		GAUJI
66		PEETH
67		PUNERVAS
68		SAVALE



SIHFW: an ISO: 9001:2008 certified institution
Concurrent Evaluation of Janmangal Programme in Rajasthan

List of Blocks

	District	Block
1	ALWAR	RAMGARH
2		TIJARA
3		UMREN
4	JALORE	AAHORE
5		BHINMAAL
6		JALORE
7		SANCHOR
8	BHILWARA	AASHIND
9		HAMERGARH
10		KOTRI
11	KOTA	KAITHUN
12		RAMGANJMANDI
13		SAGOD
14	SHRI GANGANAGAR	PADAMPUR
15		SHRI GANGANAGAR
16		SURATGARH
17	SAWAI MADHOPUR	BOLI
18		KHANDAR
19		SAWAIMADHOPUR
20	DUNGARPUR	BACHEVADA
21		SAGWADA
22		SIMALWADA